



Chassis

Rack Mount Chassis Selection Guide	2
Rack Mount Chassis Selection Guide	3
Rack Mount Chassis Selection Guide	4
RACK-2330	5
RACK-2300	5
RACK-2320	5
RACK-2000	5
RACK-200	6
RACK-260	6
RACK-210	6
RACK-220A	6
RACK-305A	7
RACK-300A	7
RACK-3000	8
RACK-3100	8

RACK-3200	9
RACK-3400	9
RACK-314A	10
RACK-360A	10
RACK-814, RACK-3025A	11
RACK-500	12
RACK-900	12
RACK-3030	13
RACK-3035	14
Compact Chassis Selection Guide	15
Compact Chassis Selection Guide	16
Compact Chassis Selection Guide	17
PR-103	18
PAC-50	18
PR-1300	18
PAC-53H	18
PAC-40H	19
PAC-51	19
PAC-42H	19
PR-105	19
PAC-400	20
PR-1500A	21
PAC-600	21
PAC-52	21
PAC-42F	21
PAC-700A	22
PAC-1060A	22
PAC-1000/1200	23
PAC-1700	23
PAC-106/107	24
PAC-40H	24
PAC-170	24
PAC-125	24
EBC-1000	25
DIN-300	26
DIN-310	26
DIN-320	26
FWAP-3680L	27
FWAP-2680L	27
FWAP-3680L	28
FWAP-2680L	28
Highly Integrated Solution for Mobile System	29
CPC-1201	30

Rack Mount Chassis Selection Guide



Model		RACK-2300	RACK-2320	RACK-2330	RACK-200	RACK-210	RACK-220A	RACK-260
Height		1U	1U	1U	2U	2U	2U	2U
SBC Type		Slot CPU Card	Slot CPU Card	Slot CPU Card	Slot CPU Card	Slot CPU Card	Slot CPU Card	12"x9.6" M/B
Construction Front panel		Metal	Metal	Metal	Plastic	Plastic	Metal	Metal
Max. Number of Slot		3 slot	3 slot	3 slot	6 slot	6 slot	6 slot	3 slot
Drive Bay	3.5 "	1 x HDD (Internal) 1 x FDD	1 x HDD (Internal)	1 x HDD (Internal)	2 x FDD	2 x HDD (Internal) 1 x FDD	1 x HDD (Internal) 1 x FDD	2 x HDD (Internal) 2 x FDD
	5.25 "	1	-	-	-	1	1	1
	Other	-	-	-	-	-	-	-
USB Port		One	One	One	-	-	-	-
System Fan		3 x 4 cm	3 x 4 cm	3 x 4 cm	1 x 8 cm	1 x 8 cm	1 x 8 cm	2 x 8 cm
Indicators		HDD/Power	HDD/Power	HDD/Power	HDD/Power	HDD/Power	HDD/Power/FAN	HDD/Power
Alarm		-	-	FAN/ Temperature	-	-	FAN	-
Other Function		-	-	LCM Display	-	-	-	-
Support IEI slide		-	-	-	-	-	-	-
Color		White / Black	White / Black	White / Black	White / Green	White / Green	White / Black	White / Black
Depth (mm)		548	429	429	454	477	473	480
Power Supply	AT	-	-	-	ACE-916V ACE-920A/AP ACE-925A/AP/ M/C/T/P ACE-932A/T ACE-935AL ACE-940AP	ACE-916V ACE-920A/AP ACE-925A/AP/ M/C/T/P ACE-932A/T ACE-935AL ACE-940AP	ACE-916V ACE-920A/AP ACE-925A/AP/ M/C/T/P ACE-932A/T ACE-935AL ACE-940AP	ACE-916V ACE-920A/AP ACE-925A/AP/ M/C/T/P ACE-932A/T ACE-935AL ACE-940AP
	ATX	ACE-1010A	ACE-816AL/APL	ACE-816AL/APL	ACE-828M/C/ T/V ACE-832A/AP/ AP-S ACE-840A ACE-841AP-S ACE-850AP	ACE-828M/C/ T/V ACE-832A/AP/ AP-S ACE-840A ACE-841AP-S ACE-850AP	ACE-828M/C/ T/V ACE-832A/AP/ AP-S ACE-840A ACE-841AP-S ACE-850AP	ACE-828M/C/ T/V ACE-832A/AP/ AP-S ACE-840A ACE-841AP-S ACE-850AP
	Redundant	-	-	-	-	-	-	-
Backplane	AT	-	-	-	BP-5SD IP-5SD3/5 PCI-5SD3/5-R2 PCI-6SR	BP-5SD IP-5SD3/5 PCI-5SD3/5-R2 PCI-6SR	BP-5SD IP-5SD3/5 PCI-5SD3/5-R2 PCI-6SR	-
	ATX	PCI-2SD2	PCI-2SD2	PCI-2SD2	PCI-5SD6	PCI-5SD6	PCI-5SD6	-
	AT/ ATX	-	-	-	-	-	-	-

Rack Mount Chassis Selection Guide



Single Board Computer

LCD Product Series

Chassis

RACK-mount

Compact

Embedded

Barebone System

Power supply

Accessory

Model		RACK-2000	RACK-300A	RACK-305A	RACK-314A	RACK-360A	RACK-3025	RACK-814
Height		2U	4U	4U	4U	4U	4U	4U
SBC Type		Slot CPU Card	12"x9.6" M/B	12"x9.6" M/B	12"x9.6" M/B	12"x9.6" M/B	Slot CPU Card	12"x9.6" M/B
Construction Front panel		Plastic	Metal	Metal	Metal	Metal	Metal	Metal
Max. Number of Slot		6 slot	14 slot / 8 slot	14 slot / 8 slot	14 slot / 8 slot	14 slot / 8 slot	10 slot	14 slot
Drive Bay	3.5 "	2 x HDD(Internal) 1 x FDD	2 x FDD	1 x HDD(Internal) 1 x FDD	1 x HDD(Internal) 1 x FDD	2 x HDD(Internal) 1 x FDD	1 x FDD	1 x HDD(Internal) 1 x FDD
	5.25 "	1	2	3	1	2	3	1
	Other	-	-	-	-	-	-	-
USB Port		-	-	-	-	One	-	One
System Fan		2 x 8 cm	1 x 12 cm	2 x 8 cm	2 x 8 cm	1 x 12 cm	2 x 8 cm	3 x 8 cm
Indicators		HDD/Power/FAN	HDD/Power	HDD/Power	HDD/Power	HDD/Power	HDD/Power	HDD/Power
Alarm		FAN	-	-	-	-	-	-
Other Function		-	Dual Reset	-	-	-	-	-
Support IEI slide		18" or 24"	18" or 24"	18" or 24"	18" or 24"	-	18" or 24"	18" or 24"
Color		White / Black	White / Green	White / Black	White / Black	White	White / Black	White / Black
Depth (mm)		575	433	413	413	450	511	465
Power Supply	AT	ACE-916V ACE-920A/AP ACE-925A/AP/ M/C/T/P ACE-932A/T ACE-935AL ACE-940AP	ACE-916V ACE-920A/AP ACE-925A/AP/ M/C/T/P ACE-932A/T ACE-935AL ACE-940AP	ACE-916V ACE-920A/AP ACE-925A/AP/ M/C/T/P ACE-932A/T ACE-935AL ACE-940AP	ACE-916V ACE-920A/AP ACE-925A/AP/ M/C/T/P ACE-932A/T ACE-935AL ACE-940AP	ACE-916V ACE-920A/AP ACE-925A/AP/ M/C/T/P ACE-932A/T ACE-935AL ACE-940AP	-	ACE-916V ACE-920A/AP ACE-925A/AP/ M/C/T/P ACE-932A/T ACE-935AL ACE-940AP
	ATX	ACE-828M/C/ T/V ACE-832A/AP/ AP-S ACE-840A ACE-841AP-S ACE-850AP	ACE-828M/ C/T/V ACE-832A/AP/ AP-S ACE-840A ACE-841AP-S ACE-850AP	ACE-828M/C/ T/V ACE-832A/AP/ AP-S ACE-840A ACE-841AP-S ACE-850AP	ACE-828M/C/ T/V ACE-832A/AP/ AP-S ACE-840A ACE-841AP-S ACE-850AP	ACE-828M/C/ T/V ACE-832A/AP/ AP-S ACE-840A ACE-841AP-S ACE-850AP	-	ACE-828M/C/ T/V ACE-832A/AP/ AP-S ACE-840A ACE-841AP-S ACE-850AP
	Redundant	ACE-R30A/AP	ACE-C232	ACE-C232	ACE-C232	ACE-C232	ACE-R20A/C/T	ACE-C232
Backplane	AT	BP-5SD IP-5SD3/5 PCI-5SD5-R2	BP-12S/14S/ 14SD	BP-12S/14S/ 14SD	BP-12S/14S/ 14SD	BP-12S/14S/ 14SD	BP-8S/10S	BP-12S/14S/ 14SD
	ATX	PCI-5SDA PCI-6SDA PCIAGP-5SD PX-6SDA	-	-	-	-	-	-
	AT/ ATX	-	PCI-12S/13SD PCI-14S/14S2/ 14S3 PX-14S2/14S3/ 14S5 IP-12S/13SD/ 14S/14S3 IPX-13S PCIAGP-12S/ 13S2/13S3 PXAGP-12S2/ 13S/13S3	PCI-12S/13SD PCI-14S/14S2/ 14S3 PX-14S2/14S3/ 14S5 IP-12S/13SD/ 14S/14S3 IPX-13S PCIAGP-12S/ 13S2/13S3 PXAGP-12S2/ 13S/13S3	PCI-12S/13SD PCI-14S/14S2/ 14S3 PX-14S2/14S3/ 14S5 IP-12S/13SD/ 14S/14S3 IPX-13S PCIAGP-12S/ 13S2/13S3 PXAGP-12S2/ 13S/13S3	PCI-12S/13SD PCI-14S/14S2/ 14S3 PX-14S2/14S3/ 14S5 IP-12S/13SD/ 14S/14S3 IPX-13S PCIAGP-12S/ 13S2/13S3 PXAGP-12S2/ 13S/13S3	PCI-8S/10S/ 10S2 PX-8S/10S IP-8S/10S/10S2 IPX-9S PCIAGP-7S/9S2 PXAGP-7S/9S	PCI-12S/13SD PCI-14S/14S2/ 14S3 PX-14S2/14S3/ 14S5 IP-12S/13SD/ 14S/14S3 IPX-13S PCIAGP-12S/ 13S2/13S3 PXAGP-12S2/ 13S/13S3

Rack Mount Chassis Selection Guide



Model		RACK-3000	RACK-3100	RACK-3200	RACK-3400	RACK-500	RACK-900	RACK-3030	RACK-3035
Height		4U	4U	4U	4U	5U	5U	6U	7U
SBC Type		IPC SBC / 12"x9.6" M/B	IPC SBC / 12"x9.6" M/B	IPC SBC / 12"x13" M/B	IPC SBC	IPC SBC	IPC SBC	IPC SBC / 12"x9.6" M/B	IPC SBC
Construction Front panel		Metal	Metal	Metal	Metal	Metal	Metal	Metal	Metal
Max. Number of Slot		14 slot / 8 slot	14 slot / 8 slot	20 slot / 8 slot	10 slot	5 slot	10 slot	20 slot / 8 slot	20 slot
Drive Bay	3.5 "	2 xHDD(Internal) 1 x FDD	2 x HDD(Internal) 1 x FDD	1 x FDD	1 x FDD	1 x HDD(Internal) 1 x FDD	2 x HDD(Internal) 1 x FDD	7 x 3.5" HDD	2 x FDD
	5.25 "	3	2	6	2	-	1	2	4
	Other	-	-	-	-	-	-	-	-
USB Port		-	-	-	-	-	-	-	-
System Fan		2 x 8 cm	3 x 8 cm	4 x 8 cm	2 x 8 cm	1 x 8 cm 1 x 4 cm	1 x 8 cm	4 x 9 cm 2 x 6 cm	5 x 8 cm
Indicators		HDD/Power/FAN	HDD/Power/FAN	HDD/Power/ FAN	HDD/Power/ FAN	HDD/Power/FAN	HDD/Power/FAN	HDD/Power	HDD/Power/ FAN
Alarm		FAN	FAN	FAN	FAN	FAN/ Temperature	FAN/Temperature	FAN	FAN/ Temperature
Other Function		-	-	-	-	-	-	-	-
Support slide		24" or 30"	24" or 30"	24" or 30"	-	-	-	18" or 24"	18" or 24"
Color		White / Black	White / Black	White / Black	White / Black	White / Black	White / Black	White / Black	White / Black
Depth (mm)		520	520	674	280	440	440	517	503
Power Supply	AT	ACE-916V ACE-920A/AP ACE-925A/AP/ M/C/T/P ACE-932A/T ACE-935AL ACE-940AP	ACE-916V ACE-920A/AP ACE-925A/AP/ M/C/T/P ACE-932A/T ACE-935AL ACE-940AP	ACE-932A/T ACE-935AL ACE-940AP	ACE-916V ACE-920A/AP ACE-925A/AP/ M/C/T/P ACE-932A/T ACE-935AL ACE-940AP	ACE-716A/AP/ C/T	ACE-723A/B/C/T	ACE-935AL ACE-940AP	-
	ATX	ACE-828M/ C/T/V ACE-832A/AP/ AP-S ACE-840A ACE-841AP-S ACE-850AP	ACE-828M/ C/T/V ACE-832A/AP/ AP-S ACE-840A ACE-841AP-S ACE-850AP	ACE-828M/ C/T/V ACE-832A/AP/ AP-S ACE-840A ACE-841AP-S ACE-850AP	ACE-828M/ C/T/V ACE-832A/AP/ AP-S ACE-840A ACE-841AP-S ACE-850AP	-	-	ACE-840A ACE-841AP-S ACE-850AP	-
		ACE-R30A/AP	ACE-R30A/AP	ACE-R30A/AP	ACE-R30A/AP	-	-	ARH-6400F	ACE-R20A/C/T
Backplane	AT	BP-12S/14S/ 14SD	BP-12S/14S/ 14SD	BP-20S PCI-17SQ	BP-8S/10S/ 10SD	IP-5S/5S2 PCI-5S2/5S3	-	BP-20S PCI-17SQ	BP-20S PCI-17SQ
	ATX	-	-	-	-	-	-	-	-
	AT/ ATX	PCI-12S/13SD PCI-14S/14S2/ 14S3 PX-14S2/14S3/ 14S5 IP-12S/13SD/ 14S/14S3 IPX-13S PCIAGP-12S/ 13S2/13S3 PXAGP-12S2/ 13S/13S3	PCI-12S/13SD PCI-14S/14S2/ 14S3 PX-14S2/14S3/ 14S5 IP-12S/13SD/ 14S/14S3 IPX-13S PCIAGP-12S/ 13S2/13S3 PXAGP-12S2/ 13S/13S3	IP-18SD/19S PCI-18SD/ 18SQ/19S PX-19S/20S/ 20S2/20S3 PXAGP-19S/ 19S2	IP-8S/10S/10S2 IPX-9S	-	IP-10S2 PCI-10S2	IP-18SD/19S PCI-18SD/ 18SQ/19S PX-19S/20S/ 20S2/20S3 PXAGP-19S/ 19S2	IP-18SD/19S PCI-18SD/ 18SQ/19S PX-19S/20S/ 20S2/20S3 PXAGP-19S/ 19S2

RACK-2300

1U Server Chassis



RACK-2300B

Removable ACE-1010A 170W ATX power supply with PFC function



RACK-2300W

170W ATX Power Supply with PFC

PCI-2SD2 Backplane accepts two PCI cards

Specifications

- ◆ 1U Height Rackmount
- ◆ Support full size PICMG CPU board
- ◆ Accept two PCI add-on cards
- ◆ Drive space for one 5.25" Drive, one 3.5" FDD and one 3.5" HDD
- ◆ Equipped with ACE-1010A 170W ATX Power Supply with PFC function
- ◆ 3 x 4cm Fans for system cooling
- ◆ Vibration: 5~17Hz, 0.1" double amplitude displacement
- ◆ 17~640Hz, 1.5G acceleration peak to peak
- ◆ Shock: 10G acceleration peak to peak
- ◆ Depth: 548.2mm (21.58")
- ◆ Net/GW (kg): 8/13

Ordering Information

- ◆ **RACK-2300** [C] / **PCI-2SD2** / **ACE-1010A**
1U Server Chassis with PCI-2SD2 backplane
- [C]: Color Code: B= Black; W= White

RACK-2330

1U Embedded Chassis



RACK-2330B

A78 2x20 LCD module



RACK-2330B

Specifications

- ◆ 1U Height Rack-mount
- ◆ With A78 2x20 characters LCD module with time clock and A106 alarm board to monitor temperature and Fans.
- ◆ Support full-size PICMG CPU board
- ◆ Accepts two PCI add-on cards
- ◆ Front panel equipped with one USB port
- ◆ Drive space for one internal 3.5" HDD
- ◆ Equipped with ACE-816AL or ACE-816APL(with PFC) 150W power supply
- ◆ 3x4cm fans for system cooling
- ◆ Depth: 429mm(16.89")
- ◆ Net/GW (kg): 6/9

Ordering Information

- ◆ **RACK- 2330** [Color] / [Backplane] / [Power Supply]
- B: Black W: White PCI-2SD2 ACE-816AL or ACE-816APL

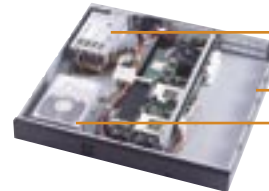
Contact Supplier About Other Power Supplies !

RACK-2320

1U Embedded Chassis



RACK-2320B



ACE-816AL or ACE-816APL 150W PSU

Two Full size PCI cards

3.5" HDD

RACK-2320B

Specifications

- ◆ 1U Height Rack-mount
- ◆ Support full-size PICMG CPU board
- ◆ Accepts two PCI add-on cards
- ◆ Drive space for one internal 3.5" HDD
- ◆ Equipped with ACE-816AL or ACE-816APL(with PFC) 150W power supply
- ◆ 3x4cm fans for system cooling
- ◆ Front panel equipped with one USB port
- ◆ Depth: 429mm(16.89")
- ◆ Net/GW (kg): 7/9

Ordering Information

- ◆ **RACK- 2320** [Color] / [Backplane] / [Power Supply]
- B: Black W: White PCI-2SD2 ACE-816AL or ACE-816APL

Contact Supplier About Other Power Supplies !

RACK-2000

Advanced 2U Chassis



RACK-2000

Specifications

- ◆ EIA RS-310C 19" Standard Rackmount
- ◆ Front panel locking door system protects disk access and on/off power switches
- ◆ Plastic front panel
- ◆ Drive Bays: 1x3.5" FDD, 1x5.25" Drive, 2x3.5" HDD(internal)
- ◆ Cooling Fan: Two 8cm cooling fans with removable filter
- ◆ Standard Power Supply: ACE-832A 300W ATX power supply
- ◆ ACE-R30A 300W ATX Redundant power supply
- ◆ Supports power supply: PS/2 size AT/ATX power supply (ACE-93x/92x/916V/940AP, ACE-828 and ACE-832 series, ACE-840A, ACE-840AP-S, ACE-850AP)
- ◆ ACE-R30A 300W ATX Redundant power supply
- ◆ Optional Backplane: BP-5SD, IP-5SD3/5, PCI-5SD5-R2, PCI-5SDA, PCI-5SDA, PCIAGP-5SD, PX- 6SDA
- ◆ Accessory: Rack-mount slide: 24" or 30" (Optional)
- ◆ Vibration: 5~17Hz, 0.1 double amplitude displacement
- ◆ 17~640Hz, 1.5G acceleration peak to peak
- ◆ Shock: 10G acceleration peak to peak (11ms)
- ◆ Color: Black (PANTONE BLACK C), White (PANTONE 413C)
- ◆ Dimensions: 431(W) x 88(H) X 575(D)mm; (17" x 3.46" x 22.6")
- ◆ Net/GW (kg): 9/10

Ordering Information

Model	Power Supply	[C] Color Code :
RACK-2000 [C]	ACE-832A	B: Black W: White
RACK-2000 [C][R]	ACE-R30A/AP	[R]: Redundant power supply

RACK-200

2U Height Full Size Industrial PC Chassis



RACK-200G



RACK-200W Top View

• Specifications

- ◆ 2U height 19" Rack mounting chassis
- ◆ Plastic front panel
- ◆ Drive Bays: 2 x 3.5" FDD
- ◆ One 8cm cooling fan with filter
- ◆ AT type KBD connector on front panel
- ◆ Supports backplane: BP-5SD, PCI-5SD3, PCI-5SD5-R2, PCI-5SD6, PCI-6SR, IP-5SD3, IP-5SD5
- ◆ Supports power supply: PS/2 size AT/ATX power supply (ACE-93x/92x/916V/940AP, ACE-828 and ACE-832 series, ACE-840A, ACE-840AP-S, ACE-850AP)
- ◆ Vibration: 5~17Hz, 0.1" double amplitude displacement
17~640Hz, 1.5G acceleration peak to peak
- ◆ Shock: 10G acceleration peak to peak (11ms)
- ◆ Colors: Industrial Green (PANTONE 417C) or White (PANTONE 413C)
- ◆ Dimensions: 431(W)x88(H)x454(D)mm; (17"x3.5"x17.9")
- ◆ Net/GW (kg): 9/10

• Ordering Information

- ◆ **RACK-200** ☐ /ACE-920A
2U rackmount chassis with ACE-920A power supply
- ☐ Color Code : G: Green W: White

RACK-210

2U Height Full Size Industrial PC Chassis



RACK-210G



RACK-210W Top View

• Specifications

- ◆ 2U height 19" Rack mounting chassis
- ◆ Plastic front panel
- ◆ Drive Bays : 1 x 5.25" Drive, 1 x 3.5" FDD, 2 x 3.5" HDD (Internal)
- ◆ One 8cm cooling fan with filter
- ◆ AT type KBD connector on front panel
- ◆ Supports backplane: BP-5SD, PCI-5SD3, PCI-5SD5-R2, PCI-5SD6, PCI-6SR, IP-5SD3, IP-5SD5
- ◆ Supports power supply: PS/2 size AT/ATX power supply (ACE-93x/92x/916V/940AP, ACE-828 and ACE-832 series, ACE-840A, ACE-840AP-S, ACE-850AP)
- ◆ Vibration: 5~17Hz, 0.1" double amplitude displacement
17~640Hz, 1.5G acceleration peak to peak
- ◆ Shock: 10G acceleration peak to peak (11ms)
- ◆ Colors: Industrial Green (PANTONE 417C) or White (PANTONE 413C)
- ◆ Dimensions: 431(W)x88(H)x477(D)mm; (17"x3.5"x18.8")
- ◆ Net/GW (kg): 8/11

• Ordering Information

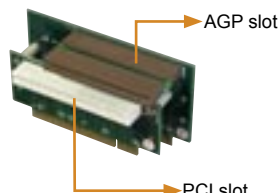
- ◆ **RACK-210** ☐ /ACE-920A
2U rackmount chassis with ACE-920A power supply
- ☐ Color Code : G: Green W: White

RACK-260

2U Height ATX Main Board Industrial PC Chassis



RACK-260



PCIAGPR-03H

• Specifications

- ◆ 2U Height 19" Rack mounting chassis
- ◆ Drive Bays: 1 x 5.25" CD-ROM, 1 x 3.5" FDD, 2 x 3.5" HDD (Internal)
- ◆ Two 8cm cooling fan
- ◆ Support standard ATX and micro ATX Main Board
- ◆ Support three half size PCI add-on cards
- ◆ Support Power Supply: standard equipped with ACE-832A Power Supply
- ◆ Optional PS/2 size AT/ATX power supply
- ◆ Vibration: 5~17Hz, 0.1" double amplitude displacement
17~640 Hz, 1.5G acceleration part to part
- ◆ Shock: 10G acceleration part to part (11ms)
- ◆ Operating temperature: 0~50°C
- ◆ Color: Black (PANTONE Black C) , White (PANTONE 413C)
- ◆ Dimension: 431mm(W) x 88.5mm(H) x 480mm(D)
- ◆ Net/GW (kg): 10/13

• Ordering Information

- ◆ **RACK - 260** ☐ / ACE - 832A
2U Height Main Board Industrial PC Chassis with ACE-832A power supply
- ☐ Color Code B=Black W=White

Option: PCIR-03 Three PCI slot riser card
PCIAGPR-03H One PCI slot and one AGP slot riser card

RACK-220A

2U Chassis



RACK-220AB



RACK-220AW Top View

• Specifications

- ◆ 2U height 19" Rack mounting chassis
- ◆ Designed with fan fault detecting system
- ◆ Front panel locking door system protects disk access and power on/off switches
- ◆ Drive Bays: 1 x 3.5" FDD; 1 x 5.25" Drive; 1 x 3.5" HDD (Internal)
- ◆ One 8cm cooling fan with removable filter
- ◆ Optional backplane: BP-5SD, PCI-5SD3, PCI-5SD5-R2, PCI-5SD6, PCI-6SR, IP-5SD3, IP-5SD5
- ◆ Supports power supply: PS/2 size AT/ATX power supply (ACE-93x/92x/916V/940AP, ACE-828 and ACE-832 series, ACE-840A, ACE-840AP-S, ACE-850AP)
- ◆ Vibration: 5 ~ 17Hz, 0.1" double amplitude displacement
17 ~ 640Hz, 1.5G acceleration peak to peak
- ◆ Shock: 10G acceleration peak to peak (11ms)
- ◆ Colors: Black (PANTONE Black C) or White (PANTONE 413C)
- ◆ Dimensions: 431(W) x 88(H) x 473(D)mm; (17" x 3.5" x 18.6")
- ◆ Net/GW (kg): 9/12

• Ordering Information

- ◆ **RACK-220A** ☐ / ACE-920A
2U rackmount chassis with ACE-920A power supply
- ☐ Color CODE: B=Black; W=White ☐ P=Power supply module

RACK-305A

4U 14-Slot Chassis

RACK-300A

4U 14-Slot Chassis



5.25" to Drive Bay



Rackmount hand



RACK-305AB
Top view



RACK-300AW
Top view

Specifications

- ◆ 4U height 19" Rack mounting chassis
- ◆ Front panel with lockable door to protect the running system
- ◆ Two reset buttons for dual system applications
- ◆ AT type KBD connector on front panel with key-lock
- ◆ Drive Bays: 1 x 3.5" FDD, 3 x 5.25" Drive, 1 x 3.5" HDD (Internal)
- ◆ Two 8cm cooling fans with removable filter
- ◆ Designed with an anti-vibration card clamp that keeps system stable
- ◆ Supports ATX form factor PC motherboard
- ◆ Supports backplane: BP-12S/14S/14SD, PCI-12S/13SD, PCI-14S/14S2/14S3, PX-14S2/14S3/14S5, IP-12S/13SD/14S/14S3, IPX-13S, PCIAGP-12S/13S2/13S3, PXAGP-12S2/13S/13S3
- ◆ Supports power supply: PS/2 size AT/ATX power supply (ACE-93x/92x/916V/940AP, ACE-828 and ACE-832 series, ACE-840A, ACE-840AP-S, ACE-850AP) or ACE-C232 mini redundant power supply
- ◆ Optional rack-mount slide: 24" or 18"
- ◆ Vibration: 5 ~ 17Hz, 0.1" double amplitude displacement
17 ~ 640Hz, 1.5G acceleration peak to peak
- ◆ Shock: 10G acceleration peak to peak (11ms)
- ◆ Colors: Black (PANTONE Black C) or White (PANTONE 413C)
- ◆ Dimensions: 431(W) x 176(H) x 413(D)mm; (17" x 6.9" x 16.3")
- ◆ Net/GW (kg): 12/15

Ordering Information

- **RACK-305A** [C] /ACE-925A
4U 14-slot rackmount chassis with ACE-925A power supply
 - **RACK-305A** [C] ATX/ACE-828A
4U ATX MB rackmount chassis with ACE-828A power supply
 - **RACK-305A** [C] R/ACE-C232
4U 14-slot rackmount chassis with ACE-C232 redundant power supply
- [C] Color Code : B: Black W: White

Specifications

- ◆ 4U height 19" Rack mounting chassis
- ◆ Plastic front panel with lockable door to protect the running system
- ◆ Two reset switches for dual system applications
- ◆ AT type KBD connector on front panel with cap protection
- ◆ Drive Bays: 2 x 3.5" FDD, 2 x 5.25" Drive
- ◆ One 12cm cooling fan with removable filter
- ◆ Designed with anti-vibration card clamp to keep system stable
- ◆ Supports ATX form factor PC motherboard
- ◆ Supports backplane: BP-12S/14S/14SD, PCI-12S/13SD, PCI-14S/14S2/14S3, PX-14S2/14S3/14S5, IP-12S/13SD/14S/14S3, IPX-13S, PCIAGP-12S/13S2/13S3, PXAGP-12S2/13S/13S3
- ◆ Supports power supply: PS/2 size AT/ATX power supply (ACE-93x/92x/916V/940AP, ACE-828 and ACE-832 series, ACE-840A, ACE-840AP-S, ACE-850AP) or ACE-C232 mini redundant power supply
- ◆ Optional Sliding Rails Kit: 24" or 18"
- ◆ Vibration: 5 ~ 17Hz, 0.1" double amplitude displacement
17 ~ 640Hz, 1.5G acceleration peak to peak
- ◆ Shock: 10G acceleration peak to peak (11ms)
- ◆ Colors: Industrial Green (PANTONE 417C) or White (PANTONE 413C)
- ◆ Dimensions: 431(W) x 176(H) x 433(D)mm; (17" x 6.9" x 17")
- ◆ Net/GW (kg): 11/14

Ordering Information

- **RACK-300A** [C] /ACE-925A
4U 14-slot rackmount chassis with ACE-925A power supply
 - **RACK-300A** [C] ATX/ACE-828A
4U ATX MB rackmount chassis with ACE-828A power supply
 - **RACK-300A** [C] R/ACE-C232
4U 14-slot rackmount chassis with ACE-C232 redundant power supply
- [C] Color Code : G:Green W: White

Single Board Computer

LCD Product Series

Chassis

RACK-mount

Compact

Embedded

Barebone System

Power supply

Accessory

RACK-3000

Advanced 4U Chassis

RACK-3100

Advanced 4U Chassis

We provide custom-design front panels!



RACK-3000

4U 14-slot
General Purpose
Chassis



RACK-3100

4U 14-slot
Full-length
Chassis

• Specifications

- ◆ EIA RS-310C 19" standard Rackmount
- ◆ RACK-3000/3100 card clamp protects against vibration.
- ◆ Slot: 14-slot/8-slot full-size
- ◆ 5.25" Drive Bay: 3 open
- ◆ 3.5" Drive Bay: 1 open, 2 internal
- ◆ Cooling Fan: 2 x 8cm
- ◆ Fan Failed Detection
- ◆ Support ATX MB
- ◆ Standard Equipped PSU: ACE-832A
- ◆ Support Backplane: PCI-12S/13SD/14S/14S2/14S3,PX-14S2/14S3/14S5, IP-13SD/14S/14S3,IPX-13S, BP-12S/14S/14SD, PCIAGP-12S/13S2/13S3PXAGP-12S2/13S/13S3
- ◆ Support 24" or 30" slide
- ◆ Vibration: 5-17Hz,0.1" double amplitude displacement
17-640Hz,1.5G acceleration peak to peak
- ◆ Shock: 10G acceleration peak to peak (11ms)
- ◆ Operating Temperature: 0~50°C
- ◆ Color: Black (PANTONE Black C) / White (PANTONE 413C)
- ◆ Depth: 520mm (20.5")
- ◆ Net/GW (kg): 13/18

• Specifications

- ◆ EIA RS-310C 19" standard Rackmount
- ◆ RACK-3000/3100 card clamp protects against vibration.
- ◆ Slot: 14-slot/8-slot full-size
- ◆ 5.25" Drive Bay: 2 open
- ◆ 3.5" Drive Bay: 1 open, 2 internal
- ◆ Cooling Fan: 3 x 8cm
- ◆ Fan Failed Detection
- ◆ Support ATX MB
- ◆ Standard Equipped PSU: ACE-832A
- ◆ Support Backplane: PCI-12S/13SD/14S/14S2/14S3,PX-14S2/14S3/14S5, IP-13SD/14S/14S3,IPX-13S, BP-12S/14S/14SD, PCIAGP-12S/13S2/13S3PXAGP-12S2/13S/13S3
- ◆ Support 24" or 30" slide
- ◆ Vibration: 5-17Hz,0.1" double amplitude displacement
17-640Hz,1.5G acceleration peak to peak
- ◆ Shock: 10G acceleration peak to peak (11ms)
- ◆ Operating Temperature: 0~50°C
- ◆ Color: Black (PANTONE Black C) / White (PANTONE 413C)
- ◆ Depth: 520mm (20.5")
- ◆ Net/GW (kg): 13/18

• Ordering Information

• RACK - 3000 **Color** **Redundant** **ATX MB** / **Power Supply**

B: Black
W: White

R: Redundant
Power Supply

ATX: for ATX
Mother Board

ACE-832A
ACE-R30A
or others

• Ordering Information

• RACK - 3100 **Color** **Redundant** **ATX MB** / **Power Supply**

B: Black
W: White

R: Redundant
Power Supply

ATX: for ATX
Mother Board

ACE-832A
ACE-R30A
or others

RACK-3200

Advanced 4U Chassis

RACK-3400

Advanced 4U Chassis

We provide custom-design front panels!



RACK-3200
4U 20-slot
Chassis



RACK-3400
4U 10-slot
Half-size
Chassis

● Specifications

- ◆ EIA RS-310C 19" standard Rackmount
- ◆ Slot: 20-slot/8-slot full-size
- ◆ 5.25" Drive Bay: 6 open
- ◆ 3.5" Drive Bay: 1 open
- ◆ Cooling Fan: 4 x 8cm
- ◆ Fan Failed Detection
- ◆ Support ATX MB
- ◆ Standard Equipped PSU: ACE-832A
- ◆ Support Backplane: BP-20S, PCI-17SQ, IP-18SD/19S, PCI-18SD/18SQ/19S, PX-19S/20S/20S2/20S3, PXAGP-19S/19S2
- ◆ Support 24" or 30" slide
- ◆ Vibration: 5-17Hz, 0.1" double amplitude displacement
17-640Hz, 1.5G acceleration peak to peak
- ◆ Shock: 10G acceleration peak to peak (11ms)
- ◆ Operating Temperature: 0~50°C
- ◆ Color: Black (PANTONE Black C) / White (PANTONE 413C)
- ◆ Depth: 674mm (26.53")
- ◆ Net/GW (kg): 18/24

● Specifications

- ◆ EIA RS-310C 19" standard Rackmount
- ◆ Slot: 10-slot full-size
- ◆ 5.25" Drive Bay: 2 open
- ◆ 3.5" Drive Bay: 1 open
- ◆ Cooling Fan: 2 x 8cm
- ◆ Fan Failed Detection
- ◆ Standard Equipped PSU: ACE-832A
- ◆ Support Backplane: BP-8S/10S/10SD, IP-8S/10S/10S2, IPX-9S
- ◆ Vibration: 5-17Hz, 0.1" double amplitude displacement
17-640Hz, 1.5G acceleration peak to peak
- ◆ Shock: 10G acceleration peak to peak (11ms)
- ◆ Operating Temperature: 0~50°C
- ◆ Color: Black (PANTONE Black C) / White (PANTONE 413C)
- ◆ Depth: 280mm (11.02")
- ◆ Net/GW (kg): 9/13

● Ordering Information

● RACK - 3200 **Color** **Redundant** **ATX MB** / **Power Supply**

B: Black
W: White

R: Redundant
Power Supply

ATX: for ATX
Mother Board

ACE-832A
ACE-R30A
or others

● Ordering Information

● RACK - 3400 **Color** **Redundant** **ATX MB** / **Power Supply**

B: Black
W: White

R: Redundant
Power Supply

ATX: for ATX
Mother Board

ACE-832A
ACE-R30A
or others

Single
Board
Computer

LCD
Product
Series

Chassis

RACK-mount
Compact

Embedded

Barebone
System

Power
supply

Accessory

RACK-314A

4U 14-Slot All Full Length Cards Chassis



RACK-314AW



Top view

Dual Front Cooling Fan

RACK-360A

4U 14-Slot Chassis



USB Port and Min Din K/B Connector

RACK-360A



**RACK-360AW
Top view**

• Specifications

- ◆ 4U height 19" Rack mounting chassis
- ◆ Front panel with lockable door to protect the running system
- ◆ Two reset switches for dual system applications
- ◆ AT type KBD connector on front panel with key-lock
- ◆ Drive Bay: 1 x 3.5" FDD, 1 x 5.25" Drive, 1 x 3.5" HDD (Internal)
- ◆ Two 8cm cooling fans with removable filter
- ◆ Designed with an anti-vibration card clamp that keeps the system stable
- ◆ Supports backplane: BP-12S/14S/14SD, PCI-12S/13SD, PCI-14S/14S2/14S3, PX-14S2/14S3/14S5, IP-12S/13SD/14S/14S3, IPX-13S, PCIAGP-12S/13S2/13S3, PXAGP-12S2/13S/13S3
- ◆ Supports power supply: PS/2 size AT/ATX PSU
- ◆ Optional rack-mount slide: 24" or 18"
- ◆ Vibration: 5~17Hz, 0.1" double amplitude displacement
17~640Hz, 1.5G acceleration peak to peak
- ◆ Shock: 10G acceleration peak to peak (11ms)
- ◆ Colors: Black (PANTONE Black C) or White (PANTONE 413C)
- ◆ Dimensions: 431(W) x 176(H) x 413(D)mm;
(17" x 6.9" x 16.3")
- ◆ Net/GW (kg): 12/15

• Ordering Information

- ◆ **RACK-314A[C]/ACE-925A :**
4U 14-slot rackmount chassis with ACE-925A power supply
- ◆ **RACK-314A[C]ATX/ACE-828A :**
4U ATX MB rackmount chassis with ACE-828A power supply

[C] Color Code : B: Black W: White

• Specifications

- ◆ 4U height 19" Rack mounting chassis
- ◆ Front panel with lockable door to protect the running system
- ◆ One USB and Min Din keyboard port connector on front panel
- ◆ Drive Bays: 1 x 3.5" FDD, 2 x 3.5" HDD (internal), 2 x 5.25" Drive
- ◆ One 12cm cooling fan with removable filter
- ◆ Designed with an anti-vibration card clamp that keeps the system stable
- ◆ Supports backplane: BP-12S/14S/14SD, PCI-12S/13SD, PCI-14S/14S2/14S3, PX-14S2/14S3/14S5, IP-12S/13SD/14S/14S3, IPX-13S, PCIAGP-12S/13S2/13S3, PXAGP-12S2/13S/13S3
- ◆ Supports power supply: PS/2 size AT/ATX PSU
- ◆ Vibration: 5 ~ 17Hz, 0.1" double amplitude displacement
17 ~ 640Hz, 1.5G acceleration peak to peak
- ◆ Shock: 10G acceleration peak to peak (11ms)
- ◆ Color: White (PANTONE 413C)
- ◆ Dimensions: 431(W) x 177(H) x 450(D)mm; (17" x 7" x 17.7")
- ◆ Net/GW (kg): 15/17

• Ordering Information

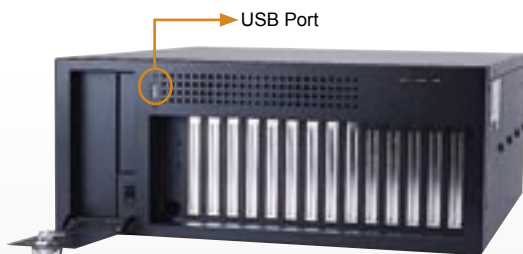
- ◆ **RACK-360AW/ACE-925A**
4U 14-slot rackmount chassis with ACE-925A power supply
- ◆ **RACK-360AWATX/ACE-828A**
4U ATX MB rackmount chassis with ACE-828A power supply
- ◆ **RACK-360AWR/ACE-C232**
4U 14-slot rackmount chassis with ACE-C232 redundant power supply

RACK-814

14-Slot full size industrial chassis

RACK-3025A

4U Height 10-Slot Full Size Industrial PC Chassis
With Redundant Power Supply Case



USB Port



RACK-814B
Top view



RACK-3025AW



RACK-3025AB



ACE-RC02
Dual Redundant
Power Supply Case

Single
Board
Computer

LCD
Product
Series

Chassis

RACK-mount

Compact

Embedded

Barebone
System

Power
supply

Accessory

Specifications

- ◆ 4U height 19" Rack mounting chassis
- ◆ Front panel with lockable door to protect the running system
- ◆ Bracket area is located in the front for easy access to the cables
- ◆ One USB port on front panel
- ◆ Drive Bays: 1 x 3.5" FDD, 1 x 5.25" Drive, 1 x 3.5" HDD (Internal)
- ◆ Three hot-removable 8cm cooling fans
- ◆ Designed with anti-vibration card clamp to keep system stable
- ◆ Supports ATX form factor PC motherboard
- ◆ Supports backplane: BP-12S/14S/14SD, PCI-12S/13SD, PCI-14S/14SD/14S3, PX-14S2/14S3/14S5, IP-12S/13SD/14S/14S3, IPX-13S, PCIAGP-12S/13S2/13S3, PXAGP-12S2/13S/13S3
- ◆ Supports power supply: PS/2 size AT/ATX power supply (ACE-93x/92x/916V/940AP, ACE-828 and ACE-832 series, ACE-840A, ACE-840AP-S, ACE-850AP) or ACE-C232 mini redundant power supply
- ◆ Optional rack-mount slide: 24" or 18"
- ◆ Vibration: 5~17Hz, 0.1" double amplitude displacement
17~640Hz, 1.5G acceleration peak to peak
- ◆ Shock: 10G acceleration peak to peak (11ms)
- ◆ Colors: Black (PANTONE Black C) or White (PANTONE 413C)
- ◆ Dimensions: 431(W) x 176(H) x 465.4(D)mm; (17" x 6.9" x 18.3")
- ◆ Net/GW (kg): 13/18

Ordering Information

- **RACK-814** ☐ **/ACE-925A** :
4U 14-slot rackmount chassis with ACE-925A power supply
 - **RACK-814** ☐ **ATX/ACE-828A** :
4U ATX MB rackmount chassis with ACE-828A power supply
 - **RACK-814** ☐ **R/ACE-C232** :
4U 14-slot rackmount chassis with ACE-C232 redundant power supply
- ☐ Color Code : B = Black, W = White ☐ Power Supply

IEI Optional

- **SLIDE-18**: 18" rack-mount slide
- **SLIDE-24**: 24" rack-mount slide
- **EXTENDER-6**: 6" extender for 18" or 24" slide

Specifications

- ◆ 4U height 19" Rack mounting chassis
- ◆ Front panel with lockable door to protect the running system
- ◆ Two reset switches for dual system applications
- ◆ AT type KBD connector on front panel
- ◆ Drive Bays: 1 x 3.5" FDD, 3 x 5.25" Drive
- ◆ Two 8cm cooling fans with removable filter
- ◆ Designed with anti-vibration card clamp to keep system stable
- ◆ Supports backplane: BP-8S/10S, PCI-8S/10S/10S2, PX-8S/10S, IP-8S/10S/10S2, IPX-9S, PCIAGP-7S/9S2, PXAGP-7S/9S
- ◆ Supports 10 full size cards
- ◆ Built-in ACE-RC02 redundant power case
- ◆ Supports power supply: ACE-R20 series redundant power module
- ◆ Optional rack-mount slide: 24" or 18"
- ◆ Vibration: 5~17Hz, 0.1" double amplitude displacement
17~640Hz, 1.5G acceleration peak to peak
- ◆ Shock: 10G acceleration peak to peak (11ms)
- ◆ Colors: Black (PANTONE Black C) or White (PANTONE 413C)
- ◆ Dimensions: 431(W) x 176(H) x 511(D)mm; (17" x 6.9" x 20.1")
- ◆ Net/GW (kg): 17/22

Ordering Information

- **RACK-3025A** ☐ :
4U 10-slot rackmount chassis with ACE-RC02 power supply case
- ☐ Color Code : B = Black; W = White

IEI Optional

- **SLIDE-24**: 24" rack-mount slide
- **EXTENDER-6**: 6" extender for 18" or 24" slide
- **ACE-R20A**: AC input redundant power module for RACK-3025A
- **ACE-R20T**: 48V DC input redundant power module for RACK-3025A
- **ACE-R20C**: 24V DC input redundant power module for RACK-3025A
(Please select one or two ACE-R20 series power module for each RACK-3025A chassis)

RACK-500

5U Height 5-Slot Full Size
Industrial PC Chassis



RACK-500W



RACK-500/900-White

RACK-900

5U Height 10-Slot Full Size
Industrial PC Chassis



RACK-900W



RACK-500/900-Black

CA-950

Feature

- 5U height
- Built-in system monitoring board to detect the temperature, +5V power supply and fan speed
- Front side removable fan filter
- Removable fan

Specifications

- ◆ 5U height 19" Rack mounting/compact chassis
- ◆ Drive Bays: 1 x 3.5" FDD : 1 x 3.5" HDD(Internal)
- ◆ One 8cm removable cooling fan with removable filter
- ◆ Built-in system monitor board
 - 2 x temperature
 - 2 x fan speed
 - 1 x +5V DC input
- ◆ Supports backplane:PCI-5S2, PCI-5S3, IP-5S, IP-5S2
- ◆ Supports 5 full size cards
- ◆ Supports power supply: ACE-716 series power supply
- ◆ Vibration: 5~17Hz, 0.1" double amplitude displacement
- ◆ Shock: 10G acceleration peak to peak (11ms)
- ◆ Colors: Black (PANTONE Black C) or White (PANTONE 413C)
- ◆ Dimensions: 110(W) x 221.5 x 440.4(D)mm;
(4.3" x 8.7" x 17.3")
- ◆ Net/GW (kg): 6/9

Ordering Information

- RACK-500[C]/ACE-[P]/[B]:
5U 5-slot compact/rackmount chassis with ACE- P power supply & B backplane
- CA-950[C]:
19" rack carrier for RACK-500/900

[C] Color Code : B = Black; W = White
[P] Power Supply ; [B] Backplane
(PCI-5S2, IP-5S, IP-5S2, PCI-5S3)

Feature

- 5U height
- Built-in system monitoring board to detect the temperature, +5V power supply and fan speed
- Front side removable fan filter
- Removable fan

Specifications

- ◆ 5U height 19" Rack mounting/compact chassis
- ◆ Drive Bays: 1x 3.5" FDD, 1 x 5.25" Drive, 2 x 3.5" HDD
- ◆ One 8cm removable cooling fan with removable filter
- ◆ Built-in system monitor board
 - 2 x temperature
 - 2 x fan speed
 - 1 x +5V DC input
- ◆ Supports backplane: PCI-10S2, IP-10S2
- ◆ Supports 10 full size cards
- ◆ Supports power supply: ACE-723 series power supply
- ◆ Vibration: 5~17Hz, 0.1" double amplitude displacement
- ◆ Shock: 10G acceleration peak to peak (11ms)
- ◆ Colors: Black (PANTONE Black C) or White (PANTONE 413C)
- ◆ Dimensions: 220(W) x 221.5 x 440.4(D)mm; (8.6" x 8.7" x 17.3")
- ◆ Net/GW (kg): 10/13
6/11(CA-950)

Ordering Information

- RACK-900[C]/ACE-[P]/[B]:
5U 10-slot compact/rackmount chassis with ACE- P power supply & B backplane
- CA-950[C]:
19" rack carrier for RACK-500/900

[C] Color Code : B = Black; W = White
[P] Power Supply ; [B] Backplane
(PCI-10S2, IP-10S2 , ACE-723B, ACE-723C, ACE-723T)

RACK-3030

6U Height 20-Slot Full Size Industrial PC Chassis With Redundant Power Supply



RACK-3030W
With 4 x 5.25" Drive Bay



RACK-3030W
Tower Stand

Two 5.25" Drive or
Four 3.25" Drive



ARH-6400F
400W ATX Redundant Power Supply



RACK-3030B



400W AT/ATX
Power Supply



Internal View

Specifications

- ◆ 6U height 19" Rack mounting chassis
- ◆ Four reset switches and PS/2 type KBD connectors for quad system applications
- ◆ Drive Bays: 7 x 3.5" HDD, 2 x 5.25" Drive Bays
- ◆ Four 9cm cooling fans with filter on the front panel and two 6cm fans on the both side
- ◆ Built-in fan speed sensors board to detect fans speed
- ◆ Designed with anti-vibration card clamp to keep system stable
- ◆ Supports backplane: BP-20S, PCI-17SQ, IP-18SD/19S, PCI-18SD/18SQ/19S, PX-19S/20S/20S2/20S3, PXAGP-19S/19S2
- ◆ Supports PS/2 AT/ATX size power supply or 400W redundant power supply
- ◆ Optional Slides: 24" or 18"
- ◆ Vibration: 5~17Hz, 0.1" double amplitude displacement
17~640Hz, 1.5G acceleration peak to peak
- ◆ Shock: 10G acceleration peak to peak (11ms)
- ◆ Colors: Black (PANTONE Black C) or White (PANTONE 413C)
- ◆ Dimensions: 431(W) x 266.6(H) x 516.7(D)mm; (17" x 10.5" x 20.3")
- ◆ Net/GW (kg): 19/26

IEI Optional

- **SLIDE-18** :18" Sliding
- **SLIDE-24** :24" Sliding
- **EXTENDER-6** : 6" extender for 18" or 24"slides

Feature

- 6U height
- Supports redundant power supply
- Four reset switches and PS/2 type KBD connectors for quad system applications
- Four 9cm cooling fans with filter
- Designed with easy removal of the driver bay

Ordering Information

- **RACK-3030** C /**ACE-940AP**:
6U 20-slot rackmount chassis with ACE-940AP power supply
- **RACK-3030R** C /**ARH-6400F**:
6U 20-slot rackmount chassis with 400W ATX type redundant power supply
- **RACK-3030** C **ATX** /**ACE-840A**:
6U ATX Main board rackmount chassis with ACE-840A power supply

C Color Code : B = Black; W = White

Single
Board
Computer

LCD
Product
Series

Chassis

RACK-mount

Compact

Embedded

Barebone
System

Power
supply

Accessory

RACK-3035

7U Height 20-Slot Full Size Industrial PC Chassis
With Redundant Power Supply Case



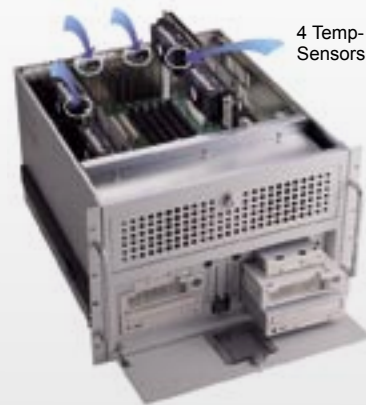
RACK-3035W



RACK-3035B



Supports N+1 type redundant power supply



4 Temp-
Sensors

Specifications

- ◆ 7U height 19" Rack mounting chassis
- ◆ Front panel with lockable door to protect the running system
- ◆ Two reset switches, AT type KBD connectors and system alarm for dual system applications
- ◆ Drive Bays: 2 x 3.5" FDD, 4 x 5.25" Drive
- ◆ Five hot removable 8cm cooling fans with removable filter; four on front side and one on rear side
- ◆ Built-in system fault detection with 4 temperature sensors, fan speed sensors and power fault detection
- ◆ Designed with anti-vibration card clamp to keep system stable
- ◆ Supports backplane: BP-20S, BP-20SD, BP-20ST, BP-20SQ, IP-19S, IP-18SD, PCI-19S, PCI-18SD, PCI-17SQ, PX-19S, PX-20S, PX-20S2, PXAGP-19S, PXAGP-19S2
- ◆ Built-in ACE-RC03 redundant power case
- ◆ Supports power supply: ACE-R20 series redundant power module
- ◆ Optional rack-mount slide: 24" or 18"
- ◆ Vibration: 5~17Hz, 0.1" double amplitude displacement
17~640Hz, 1.5G acceleration peak to peak
- ◆ Shock: 10G acceleration peak to peak (11ms)
- ◆ Colors: Black (PANTONE Black C) or White (PANTONE 413C)
- ◆ Dimensions: 431(W) x 311(H) x 503(D)mm; (17" x 12.2" x 19.8")
- ◆ Net/GW (kg): 22/29

Feature

- 7U height
- Supports N+1 type redundant power supply
- Two reset switches, AT type KBD connectors and system alarm for dual system applications
- Hot removable fan design

Ordering Information

- **RACK-3035** C :
7U 20-slot rackmount chassis with ACE-RC03 power supply case

C Color Code : B = Black; W = White

IEI Optional

- **ACE-R20A:**
AC input redundant power module for RACK-3035
- **ACE-R20T:**
48V DC input redundant power module for RACK-3035
- **ACE-R20C:**
24V DC input redundant power module for RACK-3035
- **SLIDE-18:** 18" rack-mount slide
- **SLIDE-24:** 24" rack-mount slide
- **EXTENDER-6:** 6" extender for 18" or 24" slide

(Please select one to three ACE-R20 series power module for each RACK-3035 chassis)

Compact Chassis Selection Guide



Model		PR-103	PR-1300	PAC-50	PAC-53H	PAC-40H	PAC-42H	PAC-51
Extend Slot		3 slot	3 slot	3 slot	3 slot	4 slot	4 slot	4 slot
SBC Type		Half size SBC	Half size SBC	Half size SBC	Half size SBC	Half size SBC	Half size SBC	Half size SBC
Construction Front panel		Metal	Metal	Metal	Metal	Metal	Metal	Metal
Drive Bay	3.5 "	1 x FDD	1 x FDD	-	-	1 x FDD	1 x HDD(Internal) 1 x FDD	-
	5.25 "	-	-	-	-	-	-	-
	Other	-	-	-	2 x 2.5" HDD(Internal)	1 x 2.5" HDD(Internal)	-	-
USB Port		-	-	-	-	-	-	-
System Fan		1 x 8 cm	1 x 6 cm	-	-	1 x 8 cm	1 x 8 cm	-
Indicators		HDD/Power	HDD/Power	HDD/Power	HDD/Power	HDD/Power	HDD/Power/FAN	HDD/Power
Alarm		-	-	-	-	-	FAN	-
Mounting		Wall / RACK mount	Wall / RACK mount	Wall mount	Wall mount	Wall mount	Wall mount	Wall mount
Color		White	White	Green	White	Green	White	Green
Dimension (WxHxD)mm		266x88x254	266x88x254	91x147x218	90x200x215	230x150x226	140x230x257	114x147x218
Power Supply	AT	ACE-870A/AP/ C/T ACE-865V	ACE-916A/AP	-	ACE-870A/AP/ C/T ACE-865V	ACE-870A/AP/ C/T ACE-865V	ACE-870A/AP/ C/T ACE-865V	-
	ATX	-	ACE-816A/AP ACE-815C/T	-	-	-	-	-
Backplane	AT	BP-3S IP-3S/3S2	BP-3S IP-3S/3S2	BP-3S IP-3S/3S2	BP-3S IP-3S/3S2	BP-4S IP-4S/4S2/4S3	BP-4S IP-4S/4S2/4S3	BP-4S IP-4S/4S2/4S3
	ATX	-	IP-3SA	-	-	-	-	-
	AT/ ATX	-	-	-	-	-	-	-

Single Board Computer

LCD Product Series

Chassis

RACK-mount

Compact

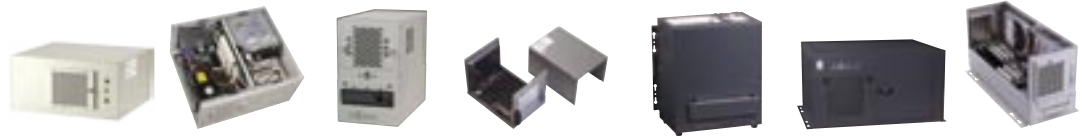
Embedded

Barebone System

Power supply

Accessory

Compact Chassis Selection Guide



Model		PR-105	PR-1500A	PAC-400	PAC-52	PAC-600	PAC-700A	PAC-42F
Extend Slot		5 slot	5 slot	5 slot	6 slot	6 slot	7 slot	4 slot
SBC Type		Half size SBC	Half size SBC	Half size SBC	Half size SBC	Half size SBC	Half size SBC	Full size SBC
Construction Front panel		Metal	Metal	Metal	Metal	Metal	Metal	Metal
Drive Bay	3.5 "	1 x HDD (Internal) 1 x FDD	1 x HDD (Internal) 1 x FDD	1 x HDD (Removable)	-	1 x HDD (Internal) 1 x FDD	1 x FDD	2 x HDD (Internal) 1 x FDD
	5.25 "	-	-	-	-	-	2	-
	Other	-	1 x slim type CD-ROM	-	-	-	-	-
USB Port		-	Two	Two	-	Two	Two	-
System Fan		1 x 8 cm	1 x 8 cm	1 x 8 cm	-	1 x 8 cm	1 x 8 cm	1 x 8 cm
Indicators		HDD/Power	HDD/Power	HDD/Power/FAN	HDD/Power	HDD/Power	HDD/Power/ FAN	HDD/Power/FAN
Alarm		-	-	FAN	-	-	FAN	FAN
Mounting		Wall / RACK mount	Wall / RACK mount	Wall mount	Wall mount	Wall mount	Wall mount	Wall mount
Color		White	White	White	Green	Dark Blue	Dark Blue	White
Dimension (WxHxD)mm		266x132x254	286x132x254	140x231x260	152x147x218	260x170x300	321x178x260	140x230x369
Power Supply	AT	ACE-870A/AP/ C/T ACE-865V	ACE-916A/AP	ACE-916A/AP	-	ACE-916V ACE-920A/AP ACE-925A/AP/ M/C/T/P ACE-932A/T ACE-935AL ACE-940AP	ACE-916A/AP	ACE-890A/AP/C/ T/V/P
	ATX	-	ACE-816A/AP ACE-815C/T ACE-830CU1/ TU1/VU1 UPF200-AA	ACE-816A/AP ACE-815C/T ACE-818APM	-	ACE-828M/C/ T/V ACE-832A/AP/ AP-S ACE-840A ACE-841AP-S ACE-850AP	ACE-816A/AP ACE-815C/815T ACE-830CU1/ TU1/VU1 UPF200-AA	-
Backplane	AT	BP-5S IP-5S/5S2	BP-5S IP-5S/5S2	BP-4S IP-4S/4S2/4S3	BP-6S IP-6S	BP-6S IP-6S	BP-7S IP-7S	BP-4S IP-4S/4S2/4S3
	ATX	-	IP-5SA/5SA2	IP-4SA/4S2A	-	-	IP-7SA	-
	AT/ ATX	-	-	-	-	IP-6SA	-	PCI-4S

Compact Chassis Selection Guide



Model		PAC-1060A	PAC-106	PAC-107	PAC-1000	PAC-1700	PAC-170	PAC-1200	PAC-125
Extend Slot		5 slot	6 slot	6 slot	6 slot	7 slot	7 slot	10 slot	10 slot
SBC Type		Full size SBC	Full size SBC	Full size SBC	Full size SBC	Full size SBC	Full size SBC	Full size SBC	Full size SBC
Construction Front panel		Metal	Metal	Metal	Plastic	Plastic	Plastic	Plastic	Metal
Drive Bay	3.5 "	1 x HDD (Internal)	1 x HDD (Internal) 1 x FDD	1 x HDD (Internal) 1 x FDD	1 x HDD (Internal) 1 x FDD	2 x HDD (Internal) 1 x FDD	2 x HDD (Internal) 1 x FDD	1 x HDD (Internal) 1 x FDD	1 x HDD (Internal) 1 x FDD
	5.25 "	1	-	1	1	1	1	1	1
	Other	-	-	-	-	-	-	-	-
USB Port		Two	-	-	-	-	-	-	-
System Fan		1 x 8 cm	1 x 8 cm	1 x 8 cm	1 x 8 cm	1 x 8 cm	1 x 8 cm	2 x 8 cm	1 x 8 cm
Indicators		HDD/Power /FAN	HDD/Power	HDD/Power	HDD/Power/ FAN	HDD/Power/ FAN	HDD/Power	HDD/Power/ FAN	HDD/Power/ FAN
Alarm		FAN	-	-	FAN	FAN	-	FAN	FAN
Mounting		Wall mount	Wall mount	Wall mount	Wall mount	-	-	Wall mount	Wall mount
Color		Dark Blue	White	White	Dark Blue	Dark Blue	Green	Dark Blue	White
Dimension (WxHxD)mm		166x192x393	166x176x393	166x224x393	232x175x419	193x254x432	193x254x432	321x175x419	320x175x419
Power Supply	AT	ACE-916A/AP	ACE-716A/ AP/C/T	ACE-716A/AP/ C/T	ACE-916V ACE-920A/AP ACE-925A/AP/ M/C/T/P ACE-932A/T ACE-935AL ACE-940AP	-	ACE-916V ACE-920A/AP ACE-925A/AP/ M/C/T/P ACE-932A/T ACE-935AL ACE-940AP	ACE-916V ACE-920A/AP ACE-925A/AP/ M/C/T/P ACE-932A/T ACE-935AL ACE-940AP	ACE-916V ACE-920A/AP ACE-925A/AP/ M/C/T/P ACE-932A/T ACE-935AL ACE-940AP
	ATX	ACE-816A/AP ACE-815C/T UPF200-AA	-	-	ACE-828M/ C/T/V ACE-832A/AP/ AP-S ACE-840A ACE-841AP-S ACE-850AP	ACE-828M/ C/T/V ACE-832A/AP/ AP-S ACE-840A ACE-841AP-S ACE-850AP	-	ACE-828M/ C/T/V ACE-832A/AP/ AP-S ACE-840A ACE-841AP-S ACE-850AP	ACE-828M/ C/T/V ACE-832A/AP/ AP-S ACE-840A ACE-841AP-S ACE-850AP
Backplane	AT	BP-5S IP-5S/5S2	BP-6S IP-6S	BP-6S IP-6S	BP-6S IP-6S	-	BP-7S IP-7S PCI-7S2	BP-8S/10S	BP-8S/10S
	ATX	IP-5SA/5SA2	-	-	IP-6SA	IP-7SA	-	-	-
	AT/ ATX	PCI-5S PCIAGP-5S	PCI-6S	PCI-6S	PCI-6S	PCI-7S PCIAGP-6S(R)	PCI-7S	IP-8S/10S/ 10S2 IPX-9S PCI-8S/10S/ 10S2 PX-8S/10S PCIAGP-7S/ 9S2 PXAGP-7S/9S	IP-8S/10S/ 10S2 IPX-9S PCI-8S/10S/ 10S2 PX-8S/10S PCIAGP-7S/ 9S2 PXAGP-7S/9S

Single Board Computer

LCD Product Series

Chassis

RACK-mount

Compact

Embedded

Barebone System

Power supply

Accessory

PR-103

3-slot Half-size Industrial PC Chassis



Specifications

- ◆ Drive Bays : 1 x 3.5" FDD
- ◆ One 8cm cooling fan with removable filter
- ◆ Supports backplane : BP-3S, IP-3S/3S2
- ◆ Supports power supply : ACE-870 series or ACE-865V
- ◆ Ship with a mounting kit for Rack mounting solution
- ◆ Vibration : 5~17Hz, 0.1" double amplitude displacement
17~640Hz, 1.5G acceleration peak to peak
- ◆ Shock : 10G acceleration peak to peak (11ms)
- ◆ Colors : White (PANTONE 413C)
- ◆ Dimensions : 266(W) x 88(H) x 254(D)mm; (10.5" x 3.5" x 10")
- ◆ Net/GW (kg) : 3/6

Ordering Information

- ◆ **PR-103W/ACE-[P]** 3-slot compact chassis with ACE- P power supply
 - ◆ **PR-103W/ACE-870A** 3-slot compact chassis with ACE-870A power supply
- [P]** Power Supply

PR-1300

3-slot Half-size Industrial PC Chassis



Specifications

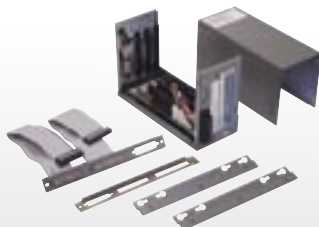
- ◆ Desk Top or Wall mount
- ◆ Drive Bays : 1x3.5" FDD
- ◆ One 6cm fan with filter
- ◆ Support Backplane:
BP-3S, IP-3S, IP-3S2 (AT power supply)
IP-3SA (ATX power supply)
- ◆ Standard Power Supply:
ACE-816A 150W ATX PSU
ACE-916A 150W AT PSU
- ◆ Optional Power Supply:
ACE-916AP 150W AT PSU with PFC function
ACE-816AP 150W ATX PSU with PFC function
- ◆ Colors: White (PANTONE 413C)
- ◆ Vibration : 5~17Hz, 0.1" double amplitude displacement
17~640Hz, 1.5G acceleration peak to peak
- ◆ Shock : 10G acceleration peak to peak (11ms)
- ◆ Dimensions: 266(W) x 88(H) x 254(D)mm
- ◆ Net/GW (kg): 4/6

Ordering Information

- ◆ **PR-1300W / [Backplane] / [Power Supply]**
- BP-3S or IP-3SA ACE-916A or ACE-816A

PAC-50

3-slot Half-size Industrial PC Chassis



Specifications

- ◆ Supports max. card length: 190mm
- ◆ Five DC input terminal block for power supply connection
- ◆ Convenient FDD, HDD & parallel port cables for external connection
- ◆ Supports backplane: IP-3S, BP-3S, IP-3S2
- ◆ Vibration: 5~17Hz, 0.1" double amplitude displacement
17~640Hz, 1.5G acceleration peak to peak
- ◆ Shock: 10G acceleration peak to peak (11ms)
- ◆ Color: Industrial Green (PANTONE 417C)
- ◆ Dimensions: 91(W) x 146.7(H) x 218(D)mm; (3.6" x 5.7" x 8.6")
- ◆ Net/GW (kg): 2/3

Ordering Information

- ◆ **PAC-50G/[B]** 3-slot compact chassis with B backplane
- [B]** Backplane
(Please select specified backplane for each PAC-50 chassis)

PAC-53H

3-slot Half-size Industrial PC Chassis



Specifications

- ◆ Drive Bays: 2 x 2.5" HDD (Internal)
- ◆ Supports backplane: IP-3S, IP-3S2, BP-3S
- ◆ Supports power supply: ACE-870 series or ACE-865V
- ◆ Vibration: 5~17Hz, 0.1" double amplitude displacement
17~640Hz, 1.5G acceleration peak to peak
- ◆ Shock: 10G acceleration peak to peak (11ms)
- ◆ Colors: White (PANTONE 413C)
- ◆ Dimensions: 90(W) x 200(H) x 214.6(D)mm; (3.5" x 7.9" x 8.4")
- ◆ Net/GW: 3/4 (kg)

Ordering Information

- ◆ **PAC-53HW/ACE-870A/[B]**:
3-slot compact chassis with ACE-870A power supply & B backplane

PAC-40H

4-slot Half-size Industrial PC Chassis



Feature

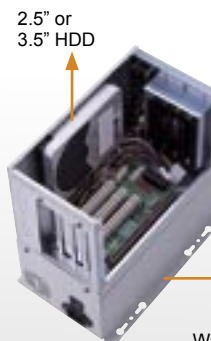
- Designed for half size cards
- One 8cm cooling fan with removable filter



Wall mounting kits

PAC-42H

4-slot Half-size Industrial PC Chassis



Wall mounting kits

Single Board Computer

LCD Product Series

Chassis

RACK-mount

Compact

Embedded

Barebone System

Power supply

Accessory

Specifications

- Driver Bays: 1 x 3.5" FDD, 1 x 3.5" HDD
- One 8cm cooling fan with removable filter
- Supports backplane: BP-4S, IP-4S/4S2/4S3
- Supports max. card length: 185mm
- Supports power supply: ACE-870 series and ACE-865V
- Vibration: 5~17Hz, 0.1" double amplitude displacement
- 17~640Hz, 1.5G acceleration peak to peak
- Shock: 10G acceleration peak to peak (11ms)
- Color: Industrial Green (PANTONE 417C)
- Dimensions: 230(W) x 150(H) x 226(D)mm; (9" x 5.9" x 8.9")
- Net/GW (kg): 4/6(kg)

Specifications

- Drive Bays: 1 x 3.5" FDD; 1 x 3.5" or 2.5" HDD(Internal)
- One 8cm cooling fan with removable filter
- Designed with fan fault detecting system
- Supports backplane: BP-4S, IP-4S, IP-4S2/4S3
- Supports power supply: ACE-870 series and ACE-865V
- Vibration: 5~17Hz, 0.1" double amplitude displacement
- 17~640Hz, 1.5G acceleration peak to peak
- Shock: 10G acceleration peak to peak (11ms)
- Colors: White (PANTONE 413C)
- Dimensions: 140(W) x 230(H) x 256.6(D)mm; (5.5" x 9" x 10.1")
- Net/GW: 4/6 (kg)

Ordering Information

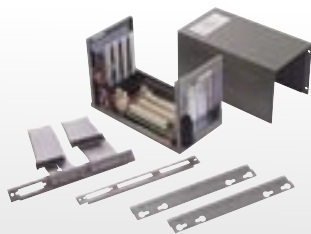
- PAC-40HG/ACE -P** 4-slot compact chassis with ACE- P power supply
- P** Power Supply
- PAC-40HG/ACE-870A** 4-slot compact chassis with ACE-870A power supply

Ordering Information

- PAC-42HW/ACE-870A / B**: 4-slot compact chassis with ACE-870A power supply & B backplane

PAC-51

4-slot Half-size Industrial PC Chassis



PR-105

5-slot Half-size Industrial PC Chassis



Specifications

- Supports backplane: IP-4S, BP-4S, IP-4S2/4S3
- Supports max. card length: 190mm
- Five DC input terminal block for power supply connection
- Convenient FDD, HDD & parallel port cables for external connection
- Vibration: 5~17Hz, 0.1" double amplitude displacement
- 17~640Hz, 1.5G acceleration peak to peak
- Shock: 10G acceleration peak to peak (11ms)
- Color: Industrial Green (PANTONE 417C)
- Dimensions: 114(W) x 146.7(H) x 218(D)mm; (4.5" x 5.7" x 8.6")
- Net/GW (kg): 2/3

Specifications

- Drive Bays: 1 x 3.5" FDD, 1 x 3.5" HDD(Internal)
- One 8cm cooling fan with removable filter
- Supports backplane: BP-5S, IP-5S/5S2
- Supports power supply: ACE-870 series or ACE-865V
- Ship with a mounting kit for Rack mounting solution
- Vibration: 5~17Hz, 0.1" double amplitude displacement
- 17~640Hz, 1.5G acceleration peak to peak
- Shock: 10G acceleration peak to peak (11ms)
- Colors: White (PANTONE 413C)
- Dimensions: 266(W) x 132(H) x 254(D)mm; (10.5" x 5.2" x 10")
- Net/GW (kg): 4/6

Ordering Information

- PAC-51G/B**: 4-slot compact chassis with B backplane
- B** Backplane(Please select specified backplane for each PAC-51 chassis)

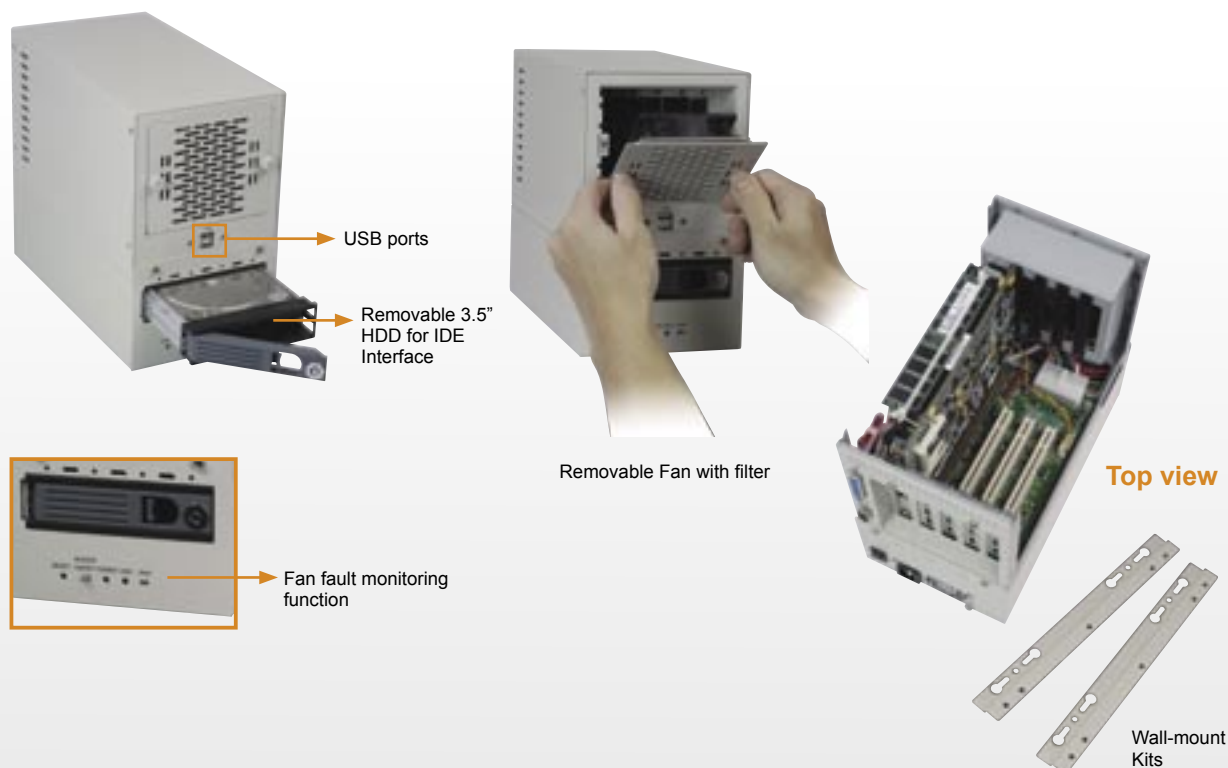
Ordering Information

- PR-105W/ACE-P** 5-slot compact chassis with ACE- P power supply
- PR-105W/ACE-870A** 5-slot compact chassis with ACE-870A power supply
- P** Power Supply

PAC-400

5 slot Half-Size Industrial PC Chassis

Pentium® 4 Solution Available !!



Specifications

- ◆ Desk Top or Wall Mount
- ◆ Front Panel equipped with two USB ports
- ◆ Designed with fan fault detecting system
- ◆ Drive Bays: One 3.5" Removable HDD(IDE Interface)
- ◆ Cooling Fan: One 8cm ball bearing cooling Fan
- ◆ Removable Fan filter
- ◆ Standard equipped with Power Supply:
ACE-816A 150W ATX Power Supply
ACE-916A 150W AT Power Supply
ACE-818APM 180W ATX Medical Power Supply (Support P4 system)
- ◆ Optional Power Supply:
ACE-816AP/815C/815T ATX Power Supply
ACE-916AP AT Power Supply
- ◆ Operating temperature: 0~50°C
- ◆ Vibration: 5~17Hz, 0.1"double amplitude displacement
17~640 Hz, 1.5G acceleration peak to peak
- ◆ Shock: 10G acceleration peak to peak (11ms)
- ◆ Color: White (PANTONE 413C)
- ◆ Dimension: 140mm(W)x231mm(H)x 260mm(D)

◆ Available Backplane :

Backplane	ISA/PCI/PCISA	Power Supply
BP-4S	4/0/0	ACE-916A
IP-4S	0/3/1	ACE-916A
IP-4S2	1/2/1	ACE-916A
IP-4S3	3/0/1	ACE-916A
IP-4SA	0/3/1	ACE-816A / ACE-818APM
IP-4S2A	0/3/1	ACE-816A / ACE-818APM

Feature

- Removable 3.5"HDD (IDE Interface)
- Removable filter
- Front panel equipped with two USB ports
- Designed with fan fault detecting system

Ordering Information

- **PAC-400W/ACE-916A**
5-Slot Industrial compact chassis with ACE-916A AT Power Supply
- **PAC-400W/ACE-816A**
5-Slot Industrial compact chassis with ACE-816A ATX Power Supply
- **PAC-400W/ACE-818APM**
5-Slot Industrial compact chassis with ACE-818APM ATX Power Supply Support P4 System

PR-1500A

5-slot Half-size Industrial PC Chassis



150/200 AT/ATX power supply



Two USB ports

Specifications

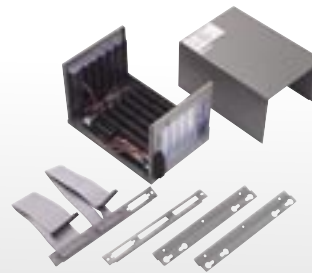
- ◆ Desk Top or Wall mount
- ◆ Drive Bays: 1 x 3.5" FDD, 1 x 3.5" HDD (Internal), 1 x slim type CD-ROM
- ◆ One 8cm fan with filter
- ◆ Support Backplane: BP-5S, IP-5S, IP-5S2 (AT power supply) IP-5SA, IP-5SA2 (ATX power supply)
- ◆ Standard Power Supply:
ACE-816A 150W ATX PSU
ACE-916A 150W ATX PSU
UPF200-AA 200W ATX PSU for P4 system
- ◆ Optional Power Supply:
ACE-916AP 150W ATX PSU with PFC function
ACE-816AP 150W ATX PSU with PFC function
ACE-830VU1/CU1/TU1 12V/24V/48V DC Input ATX PSU
- ◆ Colors: White (PANTONE 413C)
- ◆ Vibration: 5~17Hz, 0.1" double amplitude displacement
17~640Hz, 1.5G acceleration peak to peak
- ◆ Shock: 10G acceleration peak to peak (11ms)
- ◆ Dimensions: 286(W) x 132(H) x 254(D)mm
- ◆ Net/GW (kg): 5/7

Ordering Information

- **PR-1500AW:** ACE-916A or ACE-816A or UPF200-AA

PAC-52

6-slot Half-size Industrial PC Chassis



Specifications

- ◆ Supports backplane: IP-6S, BP-6S
- ◆ Supports max. card length: 190mm
- ◆ Five DC input terminal block for power supply connection
- ◆ Convenient FDD, HDD & parallel port cables for external connection
- ◆ Vibration: 5~17Hz, 0.1" double amplitude displacement
17~640Hz, 1.5G acceleration peak to peak
- ◆ Shock: 10G acceleration peak to peak (11ms)
- ◆ Color: Industrial Green (PANTONE 417C)
- ◆ Dimensions: 152(W) x 146.7(H) x 218(D)mm; (6" x 5.7" x 8.6")
- ◆ Net/GW (kg): 2/3

Ordering Information

- **PAC-52G/ [B]**: 6-slot compact chassis with B backplane
- [B] Backplane
(Please select specified backplane for each PAC-52 chassis)

PAC-600

6-slot Half-size Industrial PC Chassis



Equipped with wall-mount kit

Two USB port

Specifications

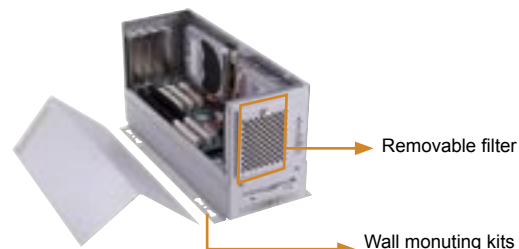
- ◆ Front Panel with door to protect the system safety
- ◆ Desk top or wall mount application
- ◆ Drive Bays: 1x3.5" FDD, 1x3.5" internal HDD drive bay
- ◆ Cooling Fan: One 8cm cooling fan with removable filter
- ◆ Dust prevent cover for Floppy drive and USB port, power switch
- ◆ Removable fan filter on the front side
- ◆ Optional BP-6S, IP-6S, Backplane for AT PSU
- ◆ Optional IP-6SA Backplane for ATX PSU
- ◆ Standard Power Supply: ACE-832A 300W ATX Power Supply
- ◆ Optional Power Supply: PS/2 Size AT/ATX Power Supply
- ◆ Vibration: 5~17Hz, 0.1" double amplitude displacement
17~640 Hz, 1.5G acceleration part to part
- ◆ Shock: 10G acceleration peak to peak (11ms)
- ◆ Color: Dark Blue (PANTONE 433C)
- ◆ Dimension: 260mm(W) x 170mm(H) x 300mm(D)
- ◆ Net/GW: 6/8(kg)

Ordering Information

- **PAC-600/ACE-925A**
6-Slot Half-size Industrial Chassis with ACE-925A Power Supply
- **PAC-600/ACE-832A**
6-Slot Half-size Industrial Chassis with ACE-832A Power Supply

PAC-42F

4-slot Full-size Industrial PC Chassis



Removable filter

Wall monuting kits

Specifications

- ◆ Drive Bays: 1 x 3.5" FDD, 2 x 3.5" HDD
- ◆ One 8cm cooling fan with removable filter
- ◆ Designed with fan fault detecting system
- ◆ Supports backplane: BP-4S, IP-4S, PCI-4S, IP-4S2, IP-4S3
- ◆ Supports power supply : ACE-890 Series power supply
- ◆ Vibration: 5~17Hz, 0.1" double amplitude displacement
17~640Hz, 1.5G acceleration peak to peak
- ◆ Shock: 10G acceleration peak to peak (11ms)
- ◆ Color: White (PANTONE 413C)
- ◆ Dimensions: 140(W) x 200(H) x 396(D)mm; (5.5" x 7.9" x 15.6")
- ◆ Net/GW: 5/7 (kg)

Ordering Information

- **PAC-42FW/ACE-890A**
4-slot compact chassis with ACE-890A power supply

Single Board Computer

LCD Product Series

Chassis

RACK-mount

Compact

Embedded

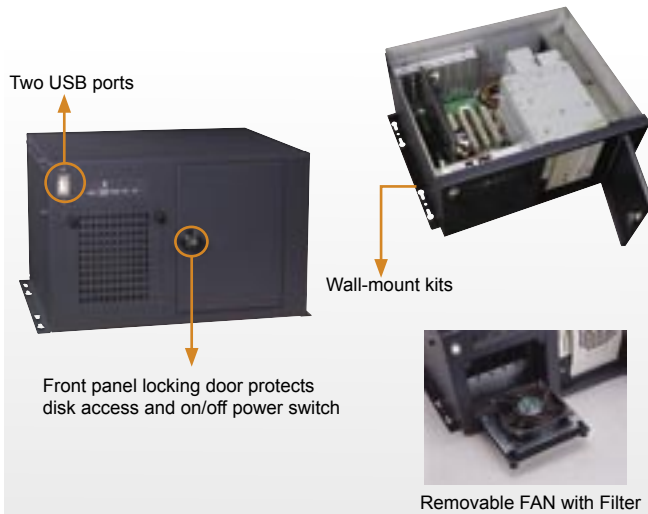
Barebone System

Power supply

Accessory

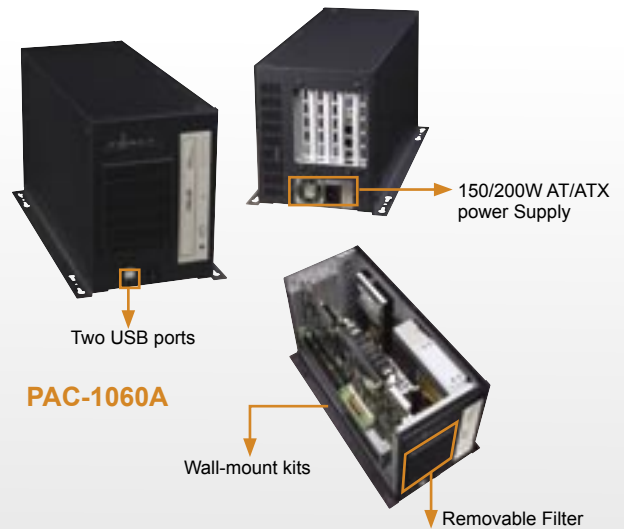
PAC-700A

7-slot Half-size Industrial PC Chassis



PAC-1060A

5-slot Full-Size Industrial PC Chassis



Specifications

- ◆ Design to mount on Desktop and Wall mount
- ◆ Drive Bays: 1x3.5" FDD, 2x5.25" Drive space
- ◆ One 8cm ball bearing cooling Fan with removable filter
- ◆ Designed with fan fault detecting system
- ◆ Front panel equipped with two USB ports
- ◆ Optional Power Supply
ACE-830CU1/TU1/V/U1, ACE-816AP/815C/815T ATX Power Supply
ACE-916AP AT Power Supply
- ◆ Vibration: 5~17Hz, 0.1"double amplitude displacement
17~640 Hz, 1.5G acceleration part to part
- ◆ Shock: 10G acceleration part to part (11ms)
- ◆ Color: Dark Blue (PANTONE 433C)
- ◆ Dimension: 321mm(W)x178mm(H)x 260mm(D)
- ◆ Optional Backplane :

	ISA/PCI/PCISA	Power Supply
BP-7S	7/0/0	ACE-916A
IP-7SA	2/4/1	ACE-816A / UPF200-AA
IP-7S	2/4/1	ACE-916A

- ◆ Standard equipped with Power Supply :
ACE-816A 150W with ATX Power Supply
ACE-916A 150W with AT power supply
UPF200-AA 200W with ATX Power Supply(Support P4 system)

UPF200-AA	+3.3V	+5V	+12V	-5V	-12V	+5Vsb
Min Load	0.5A	1A	1A	-	-	-
Max Load	9A	21A	10A	0.3A	0.8A	2A
Remark	+3.3V & +5V total 110W					
	+3.3V & +5V & +12V total 180W					

Ordering Information

- **PAC-700A/IP-7SA/ACE-816A :**
7-Slot half-size Industrial compact chassis with ACE-816A 150W ATX Power Supply and IP-7SA Backplane
- **PAC-700A/BP-7S/ACE-916A :**
7-Slot half-size Industrial compact chassis with ACE-916A 150W AT Power Supply and BP-7S Backplane
- **PAC-700A/IP-7SA/UPF200-AA :**
7-Slot half-size Industrial compact chassis with UPF200-AA200W ATX Power Supply and IP-7SA Backplane, support P4 system

Specifications

- ◆ Design to mount on Desktop and Wall mount
- ◆ Drive Bays: 1x5.25" drive bay, 1x3.5" HDD drive bay (Internal)
- ◆ Optional 5.25" Drive bay: FCD-501, FCD-502, FCD-503
- ◆ One 8cm ball bearing cooling Fan
- ◆ Removable filter
- ◆ Designed with fan fault detecting system
- ◆ Front panel equipped with two USB ports
- ◆ Standard equipped with Power Supply:
ACE-816A 150W with ATX Power Supply
ACE-916A 150W with AT power supply
UPF200-AA 200W with ATX Power Supply(Support P4 system)
- ◆ Vibration: 5~17Hz, 0.1"double amplitude displacement
17~640 Hz, 1.5G acceleration part to part
- ◆ Shock: 10G acceleration part to part (11ms)
- ◆ Color: Dark Blue (PANTONE 433C)
- ◆ Dimension: 166mm(W)x192mm(H)x393mm(D)

- ◆ Optional Backplane :

	ISA/PCI/PCISA	AGP/PCI/PIAGP
PCI-5S	1/3/2	-
PIAGP-5S(R)	-	1/3/1

- ◆ Optional Power Supply : ACE-816AP/815C/815T ATX Power Supply
ACE-916AP AT Power Supply

UPF200-AA	+3.3V	+5V	+12V	-5V	-12V	+5Vsb
Min Load	0.5A	1A	1A	-	-	-
Max Load	9A	21A	10A	0.3A	0.8A	2A
Remark	+3.3V & +5V total 110W					
	+3.3V & +5V & +12V total 180W					

Ordering Information

- **PAC-1060A/ACE-816A :**
5-Slot Industrial compact chassis with ACE-816A ATX Power Supply
- **PAC-1060A/ACE-916A :**
5-Slot Industrial compact chassis with ACE-916A AT Power Supply
- **PAC-1060A/UPF200-AA :**
5-Slot Industrial compact chassis with UPF200-AA ATX Power Supply, support P4 system

PAC-1000/1200

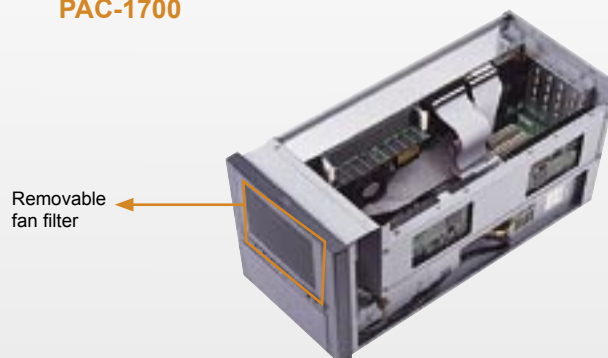
6/10-slot Full-size Chassis

PAC-1700

7-slot Full Size Industrial PC Chassis



PAC-1700



Specifications

- ◆ Desk Top or Wall mount
- ◆ Front panel made of plastic
- ◆ 8cm Fan for best cooling performance
 - PAC-1000: One Fan
 - PAC-1200: Two Fan
- ◆ Removable Fan filter
- ◆ Card Clamp to against vibration/shock
- ◆ Drive Bays :
 - 1 x 5.25" drive
 - 1 x 3.5" HDD(Internal)
 - 1 x 3.5" FDD
- ◆ Design with fan fault detecting system
- ◆ Support Backplane: 6/10 slot backplane
- ◆ Power Supply:
 - ACE-832A/AP 300W ATX power supply
- ◆ Optional Power Supply:
 - PS/2 size AT/ATX Power Supply
- ◆ Operation Temp: 0~50°C
- ◆ Vibration: 5~17Hz, 0.1" double amplitude displacement
 - 17~640Hz, 1.5G acceleration peak to peak
- ◆ Shock: 10G acceleration peak to peak (11ms)
- ◆ Color : Dark Blue (PANTONE 433C)
- ◆ Net/GW(kg): 7/10(PAC-1000), 8/12(PAC-1200)

Ordering Information

- **PAC-1000 / ACE-832A/AP**
6-Slot full size chassis with ACE-832A/AP 300W ATX power supply
 - **PAC-1200 / ACE-832A/AP**
10-Slot full size chassis with ACE-832A/AP 300W ATX power supply
- Contact us for other power supply configuration!

Specifications

- ◆ Front panel with door to protect the system safety
- ◆ Front panel made of plastic
- ◆ One 8cm cooling fan with removable filter
- ◆ Drive Bays:
 - 1 x 3.5" FDD
 - 1 x 5.25" Drive
 - 2 x 3.5" HDD (Internal)
- ◆ Design with fan fault detecting system
- ◆ Standard Power Supply:
 - ACE-832A 300W ATX Power supply
- ◆ Optional Power Supply:
 - PS/2 size ATX Power Supply
- ◆ Support 7-slots full size backplane:
 - PCIAGP-6S(R), PCI-7S, IP-7S...
- ◆ Operation Temp: 0~50°C
- ◆ Vibration:
 - 5~17 Hz, 0.1" double amplitude displacement
 - 17~640 Hz, 1.5G acceleration peak to peak.
- ◆ Shock: 10G acceleration peak to peak (11ms)
- ◆ Color: Dark Blue (PANTONE 433C)
- ◆ Dimension: 192(W) x 253(H) x 432(D) mm
- ◆ Net/GW: 8/10 (kg)

Ordering Information

- **PAC-1700 / ACE-832A**
7-Slot full size chassis with ACE-832A 300W ATX power supply

Single Board Computer

LCD Product Series

Chassis

RACK-mount

Compact

Embedded

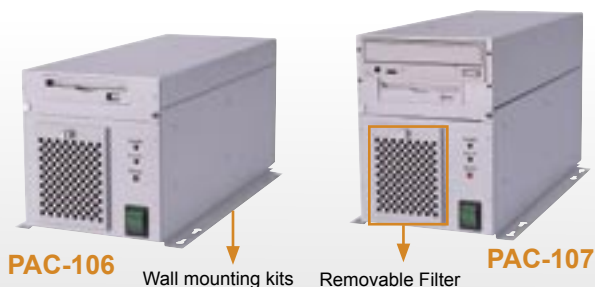
Barebone System

Power supply

Accessory

PAC-106/107

6-slot Full-size Industrial PC Chassis



Specifications

◆ Drive Bays:

Model	3.5" FDD	5.25" Drive	3.5" HDD
PAC-106	1	-	1 (Internal)
PAC-107	1	1	1 (Internal)

- ◆ One 8cm cooling fan with removable filter
- ◆ Supports backplane: BP-6S, IP-6S, PCI-6S
- ◆ Supports power supply: ACE-716 series power supply
- ◆ Vibration: 5~17Hz, 0.1" double amplitude displacement
17~640 Hz, 1.5G acceleration part to part
- ◆ Shock: 10G acceleration peak to peak (11ms)
- ◆ Color: White (PANTONE 413C)
- ◆ Dimensions:
-PAC-106 : 166 (W) x 175.5 (H) x 393 (D) mm (6.5" x 6.9" x 15.5")
-PAC-107 : 166 (W) x 224.5 (H) x 393 (D) mm (6.5" x 8.8" x 15.5")
- ◆ Net/GW(kg): 5/7kg (PAC-106), 6/9kg (PAC-107)

Feature

- Designed for full / half size cards
- One 8cm cooling fan with removable filter
- Specially design for HDD / FDD, easily to do installation

Ordering Information

- **PAC-106W/ACE -[P]**
6-slot compact chassis with ACE- P power supply
- **PAC-107W/ACE-[P]**
6-slot compact chassis with ACE- P power supply
- [P] Power Supply**
- Standard Version**
- **PAC-106W/ACE-716A**
6-slot compact chassis with ACE-716A power supply
- **PAC-107W/ACE-716A**
6-slot compact chassis with ACE-716A power supply

PAC-170

7-slot Full-size Industrial PC Chassis



Specifications

- ◆ AT KBD connector on front panel
- ◆ Front panel made by plastic
- ◆ Drive Bays : 1 x 3.5" FDD, 1 x 5.25" Drive, 2 x 3.5" HDD (Internal)
- ◆ One 8cm cooling fan with removable filter
- ◆ Supports backplane : BP-7S, IP-7S, PCI-7S, PCIAGP-6S
- ◆ Supports power supply : PS/2 size AT/ATX power supply
- ◆ Vibration : 5~17Hz, 0.1" double amplitude displacement
17~640Hz, 1.5G acceleration peak to peak
- ◆ Shock : 10G acceleration peak to peak (11ms)
- ◆ Color : Industrial Green (PANTONE 417C)
- ◆ Dimensions : 193(W) x 254(H) x 432(D)mm; (7.6" x 10" x 17")
- ◆ Net/GW : 8/10 (kg)

Ordering Information

- **PAC-170G/ACE-925A:**
7-slot compact chassis with ACE-925A power supply

PAC-125

10-slot Full-size Industrial PC Chassis



Specifications

- ◆ Front panel with lockable door to protect the system
- ◆ Drive Bays : 1 x 3.5" FDD, 1x 5.25" Drive, 1 x 3.5" HDD (Internal)
- ◆ One hot-removable 8cm cooling fan with filter
- ◆ Designed with fan fault detecting system
- ◆ Designed with anti-vibration card clamp to keep system stable
- ◆ Supports baby AT form factor PC motherboard
- ◆ Supports backplane : BP-10S, BP-10SD, IP-10S, PCI-10S,
PCIAGP-9S2, PXAGP-9S
- ◆ Supports power supply : PS/2 size AT/ATX power supply
(ACE-93x/92x/916V series and ACE-828 series)
- ◆ Vibration : 5~17Hz, 0.1" double amplitude displacement
7~640Hz, 1.5G acceleration peak to peak
- ◆ Shock : 10G acceleration peak to peak (11ms)
- ◆ Color : White (PANTONE 413C)
- ◆ Dimensions : 320(W) x 175(H) x 419(D)mm; (12.6" x 6.9" x 16.5")
- ◆ Net/GW : 9/13 (kg)

Ordering Information

- **PAC-125W/ACE-920A :**
10-slot compact chassis with ACE-920A power supply

EBC-1000

Industrial 3.5" Embedded Chassis

Customized-I/O solution for compact size and flexible!!

Single Board Computer

LCD Product Series

Chassis

RACK-mount

Compact

Embedded

Barebone System

Power supply

Accessory



Wall mount kits

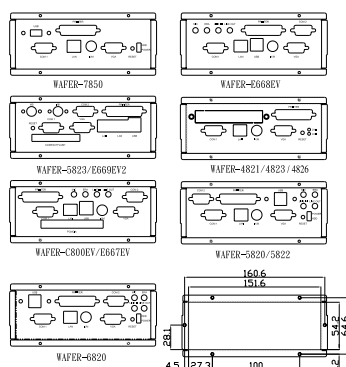
Feature

- Multi Mounting Design
- IEI WAFER series SBC Supported Embedded Chassis
- Flexible Customizing I/O Port
- Support AC/DC Input Power Supply for different power environment

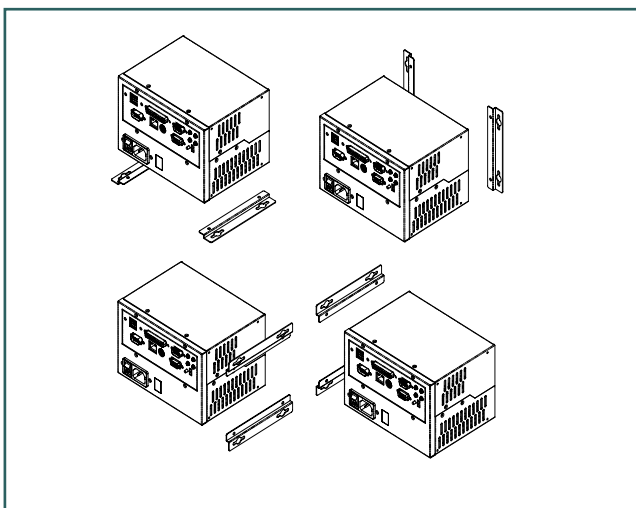
Specifications

- ◆ Designed to Wall-mount application
- ◆ Designed to IEI 3.5"WAFER series SBC
- ◆ Drive Bays: One 2.5" Internal HDD Drive Bay
- ◆ Standard equipped with Power Supply
ACE-890A 90W AC Input AT Power Supply
- ◆ Optional Power Supply:
ACE-890AP AC Input AT Power Supply with PFC Function
ACE-890V 12V DC Input AT Power Supply
ACE-890C 24V DC Input AT Power Supply
ACE-890T 48V DC Input AT Power Supply
ACE-890P 100V DC Input AT Power Supply
- ◆ Operating temperature: 0~50°C
- ◆ Vibration: 5~17Hz, 0.1" double amplitude displacement
17~640 Hz, 1.5G acceleration peak to peak
- ◆ Shock: 10G acceleration peak to peak (11ms)
- ◆ Color: Dark Blue (PANTONE 433C)
- ◆ Dimension: 172mm(W)x 116mm(H)x 129mm(D)

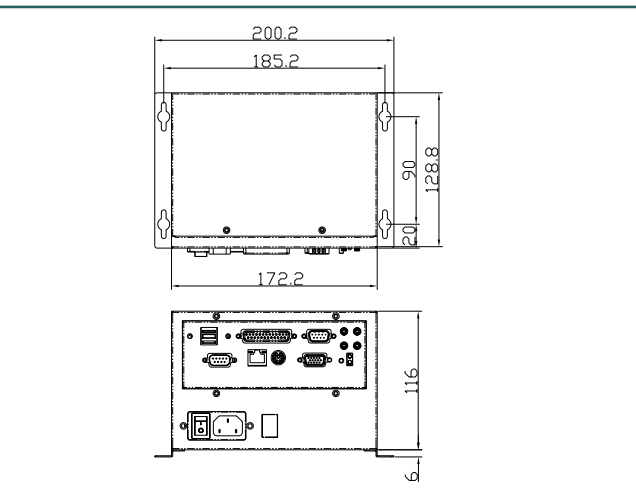
I/O



Flexible Mounting



Dimensions



Ordering Information

- **EBC-1000/ACE-890A**
Industrial 3.5" Embedded Chassis with 90W AT Power supply
Without I/O Bracket
- **BK-4821**
WAFER-4821/4823/4826 I/O Bracket and Cable set
- **BK-5820** WAFER-5820/5822/ I/O Bracket and Cable set
- **BK-5823** WAFER-5823/E669/C400 I/O Bracket and Cable set
- **BK-6820** WAFER-6820 I/O Bracket and Cable set
- **BK-7850** WAFER-7850 I/O Bracket and Cable set
- **BK-C800** WAFER-C800/E667 I/O Bracket and Cable set
- **BK-E668** WAFER-E668 I/O Bracket and Cable set

DIN-300

GX1-300 DIN/Wall-mount
PC base controller

DIN-310

Transmeta Long Run CPU
base controller

DIN-320

VIA C3-1G/ EDEN 733
CPU base controller

DIN-300



WAFAER-5820-R3
3.5"Embedded SBC GX-1
300MHz CPU

DIN-310



WAFAER-6820-733
3.5"Embedded SBC
Transmeta TM5800 733MHz
CPU

DIN-320

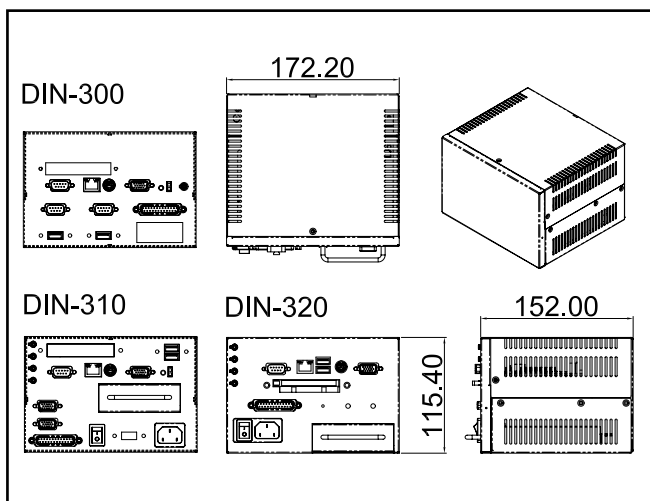


WAFAER-C800EV-1G
WAFAER-E667EV-733
3.5"Embedded SBC VIA C3
800 1GHz/EDEN 733MHz CPU

Specifications

- ◆ Designed to mount on DIN rail or wall-mount application
- ◆ DIN-300 equipped with WAFAER-5820-300 GX1-300 Embedded Board
- ◆ DIN-310 equipped with WAFAER-6820-733 Transmeta TM5800 Embedded Board
- ◆ DIN-320 equipped with WAFAER-C800EV-1G/E667EV-733 VIA Embedded Board
- ◆ Ship with memory: DIN-300 with 64MB, DIN-310/DIN-320 with 128MB,
- ◆ Drive Bay support
DIN-300: internal 1 x 2.5" HDD
DIN-310, DIN-320: 1 x Removable 2.5" HDD
- ◆ Built-in one PCMCIA type II socket(DIN-320)
- ◆ External I/O Port: RS-232/422/485, LAN, VGA, Audio, Mouse, Keyboard, and USB, Print port
- ◆ DIN-300/310: Optional PM-1038, 2-slot PCMCIA PC/104 module (Design for Wireless LAN application)
- ◆ Standard Power Supply
 - DIN-300: 20W, 90V-265VAC or 24V DC Input.(+5V@4A, +12@0.75A)
 - DIN-310/320: standard equipped with 40W Power Supply (+5@3A, +12@2A)
- ◆ Color: Dark Blue (PANTONE 433C)
- ◆ Full Test and Burn-in in house to meet industrial application requirement
- ◆ Operation temperature: 0~50°C
- ◆ Vibration: 5~17Hz, 0.1"double amplitude displacement
17~640 Hz, 1.5G acceleration peak to peak
- ◆ Shock: 10G acceleration peak to peak (11ms)
- ◆ Relative Humidity: 5~95%, non-condensing.
- ◆ Dimensions: 172.2(W) x 116(H) x 157.8(D)mm
- ◆ NET/GW: 1/2 (kg)

Dimensions



Ordering Information

Embedded PC based controller system

Model	SBC	RAM
DIN-300 DIN-300-24V	WAFAER-5820-R3	64MB
DIN-310-R2 DIN-310-24V-R2	WAFAER-6820-733	128MB
DIN-320 DIN-320-24V	WAFAER-C800EV-1G WAFAER-E667EV-733	128MB

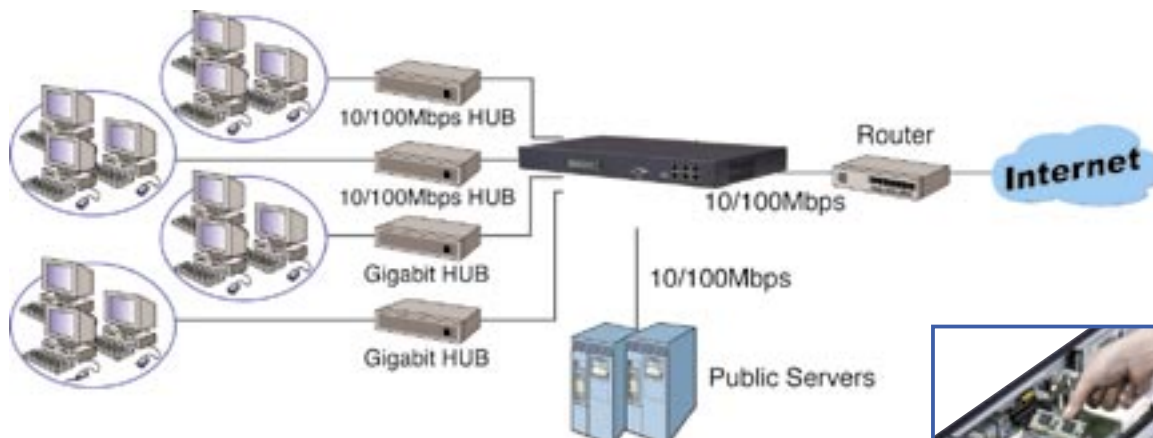
Note: DIN-3XX-24V 24VDC Input

FWAP-3680L

Rackmount Internet Security Platform
with 6 Ethernet Ports and LCD Display

FWAP-2680L

Desktop Internet Security Platform with
3 Ethernet Ports and LCD Display



Expendable two Socket-PCI for
add-on LAN module



The changeable front panel and cover provides
easier hardware customization

Main Features

- ◆ **Flexible Front Panel Customization**
The removable front panel and cover make hardware customization easier. Design to be very easy to customize printing, color and even company logo.
- ◆ **Programmable LCD Display Module**
Allows users to easily monitor the system status by reading the LCD panel. Allows page message editing and auto flashing.
- ◆ **Power and Storage**
Support DC power supply and 2.5" HDD anti-vibration kit for mobile operation scenarios.
- ◆ **Low Power Consumption Processor**
High processing performance and low power consumption features of Intel Pentium III/ Celeron/ NS GX1-300MHz processor to meet the needs of high-demanding Internet Appliances.
- ◆ **Console Port for Local Setting**
- ◆ **Scalable Design**
FWAP-3680 Expendable Socket-PCI LAN Modules offering two socket PCI add-on LAN module, the system can support up to 6 LAN ports, either 10/100Mbps Ethernet (LM-102N-x59, LM-102R) or Gigabit Ethernet (LM-2G) on various applications.

Flexible Hardware Platform for Rapid Build-up of any Firewall/VPN/IDS Appliance – FWAP-2680/ 3680

The last thing you want to worry about in building a Firewall/VPN/IDS system is having to deal with a suitable hardware solution. The FWAP-2680/ 3680 Internet Security Platform is a Firewall/ VPN/ IDS platform suitable for enterprise users. With the flexibility to have customized front plate and 2, 3, 4 or 6 LAN ports, you can put more of your valuable time and effort on developing the necessary software platform solution to meet your customer's demand.

Flexible Platform

With the intention to be a flexible Internet Platform, FWAP-2680/ 3680 has designed a few appropriate key features. The built-in IDE HDD allows users to store OS and AP, as well as event logs in the local site. We also have the available Compact Flash Type II socket built inside the platform for customers who wish to have their software OS stored in a CF card. Moreover, the front cover of FWAP-2680/ 3680 can be easily customized for specific customer's logo and graphics.

Customized for Internet Application

The FWAP-3680 system provides up to 6 fast Ethernet ports for LAN, WAN, DMZ, and management ports. In addition, it also provides one RS-232 port in the front for local management, maintenance, and diagnostic. For customers who need expansion, a CF type II card slot can be built externally as well to support wireless LAN application or other CF devices. The programmable LCD display module allows for fast display of system critical information such as IP address, machine status, alerts and warnings. The user also has the option to completely seal and disable the I/O ports such as USB, PS/2, VGA, Parallel, and audio port in order to fit specific requirements. In the same product family, we also have the FWAP-2680, which is a more cost effective solution desktop version of the FWAP-2680.

OEM Projects Welcome

With such flexibility in our Internet Platform, we welcome your OEM projects. We offer the best solution for rapid development of your Internet Platform application needs. IEI is eager to customize your own logo on the front plate of FWAP-2680/3680 for you!

Single
Board
Computer

LCD
Product
Series

Chassis

RACK-mount

Compact

Embedded

Barebone
System

Power
supply

Accessory

FWAP-3680L

Rackmount Internet Security Platform
with 6 Ethernet Ports and LCD Display

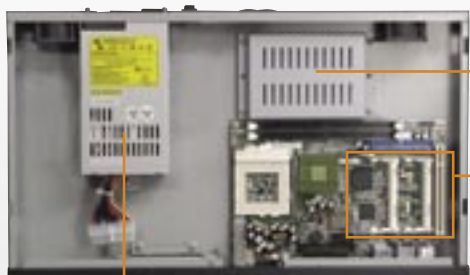
FWAP-2680L

Desktop Internet Security Platform with
3 Ethernet Ports and LCD Display

OEM Project Welcome!



FWAP-3680L
Rackmount Solution



150W ATX Power Supply
with PFC Function

One 2.5"HDD drive bay
with anti-vibration drive kti

Two Socket PCI



FWAP-2680L
Desktop Solution



One 2.5"HDD drive bay

Specifications

- ◆ Management: Console on the front panel
- ◆ FWAP-2680L/ 3680L supports one A125 16x2 characters LCD display module with RS-232 interface
- ◆ Ethernet FWAP-3680:
External RJ-45 x 6, socket PCI add-on LAN module supports system up to 6 LAN ports. Standard equipped with dual Intel 10/100 Mbps LAN controllers onboard Up to 6x LAN with LAN module daughter board: LM-102R (Dual Realtek 8100), LM-102N (Dual i82559/i82550), LM-2G (Dual Broadcom 5701/5703 Gigabit chip)
- ◆ FWAP-2680: External RJ-45 x 3,
- ◆ WDT: Software programmable, support 1~ 255 sec. system reset
- ◆ Vibration: 5 ~ 17Hz, 0.1" double amplitude displacement
17 ~ 640Hz, 1.5G acceleration peak to peak
- ◆ Shock: 10G acceleration peak to peak (11ms)
- ◆ Operation temperature: 0 ~ 50°C
- ◆ Color: Dark Blue (PANTONE 433C)

ITEM	FWAP-2680L	FWAP-3680L
Mount Solution	Desktop and Wall mount	RACK-mount
Embedded board	NOVA-4899N	NOVA-7898
CPU	NS Geode GX1-300MHz	Pentium III (133MHz FSB)
System Chipset	NS CS5530A	Intel 815B-E
System Memory	SO-DIMM Up to 512MB DRAM	DIMM Up to 512MB DRAM
SSD	1 x Compact Flash™ type II	N/A
System FAN	One 40 x 40 x 10 mm	Two 40 x 40 x 28 mm
CPU Cooling FAN	Fan-less	CF-507
Power Supply	AC Input 46W Adapter	ACE-816APS
DC Power Supply	N/A	ACE-815C / ACE-815T
Dimension	320(W)x44(H)x165(D)mm	431(W)x44(H)x251(D)mm
Drive Bay	One 2.5' HDD	One 2.5" HDD

IEI Optional

- ◆ LM module (Socket PCI connector)

LM-102N-x59 Dual i82559 LAN Module
LM-102R Dual Realtek 8100 LAN Module
LM-2G Dual Broadcom 5701/5703 Gigabit LAN Module

Ordering Information

- **FWAP-2680**
Rackmount Internet Security Platform with 3 Ethernet Ports
- **FWAP-2680L**
Rackmount Internet Security Platform with 3 Ethernet Ports and LCD Display
- **FWAP-3680L** / **FWAP-3680**
Rackmount Internet Security Platform with 6 Ethernet Ports and LCD Display
- **FWAP-3680** / **FWAP-3680L**
Rackmount Internet Security Platform with 6 Ethernet Ports



LM-2G

LM-102N

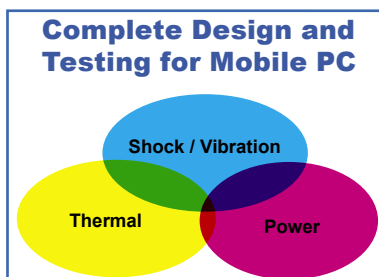
LM-102R

Highly Integrated Solution for Mobile System

IEI Mobile PC Solution

The Enabling Technology behind Mobile PC

A true Mobile PC solution needs to take care of at least three things - high temperature, shock vibration, and uncertainty in steady supply of power. Your everyday laptop computer simply is not built for such environment. With IEI's expertise in industrial grade computer, we have the knowledge to build solutions that meets the standard necessary in a car environment. Our CPC-1201 is just a live demonstration of our ability put into a real product. We ask you to challenge us with your current and future mobile PC project, whether it would be in a car, a bus, train, boat, and even aircrafts. We have what it takes to build it for you.



The Shock Factor

In a mobile environment, constant or abrupt shock and vibration is unavoidable. While regular PC probably sits on a desk or cold room nice and comfortably, the mobile world is rough and harsh for the PC itself. That is why IEI's expertise in industrial PC becomes valuable. IEI has complete facility to help design and test complete mobile PC solutions for customers who are concerned about the total moving parts.

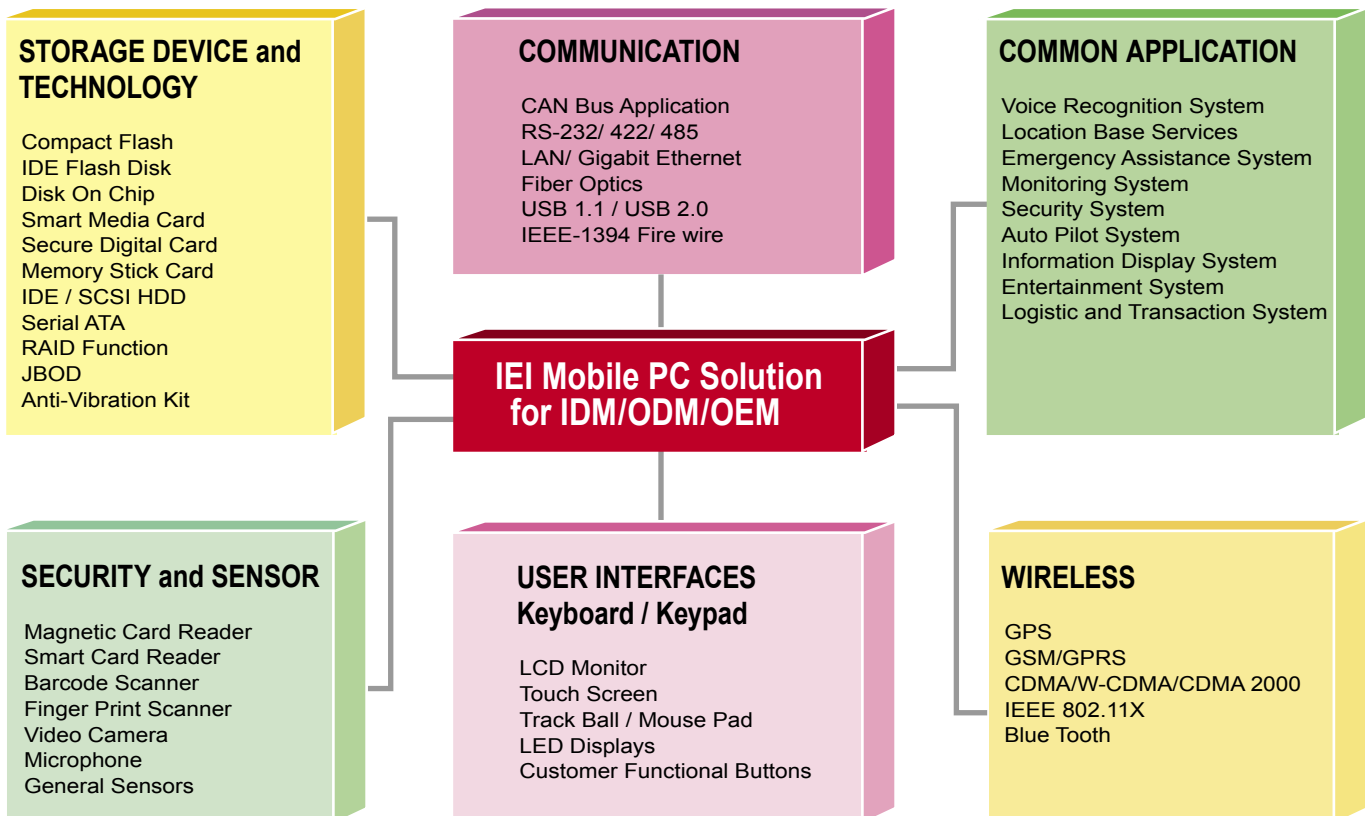
The Power Factor

A critical factor in mobile PC is power source. In our CPC-1201, we have developed a power source solution with the ACE-810V/ACE-818C power source. These power source has a high tolerance level in input power, and is also integrated with a backup battery module to provide continuous supply of power in the event when there is shortage of power input.

Moreover, it is equally important to lower the total power consumption of the entire Mobile PC system. For this reason, the CPC-1201 uses embedded CPU in order to minimize any chance of moving parts as well as optimize for power consumption.

The Temperature Factor

The temperature change at various part of the globe can be a factor that would damage or even disable a PC. At IEI, we have dedicated R&D team at solving thermal issues and chassis design to maximize heat dissipation as well as perform simulations of customer's required environmental conditions – we provide total solutions for your needs.



Single Board Computer

LCD Product Series

Chassis

RACK-mount

Compact

Embedded

Barebone System

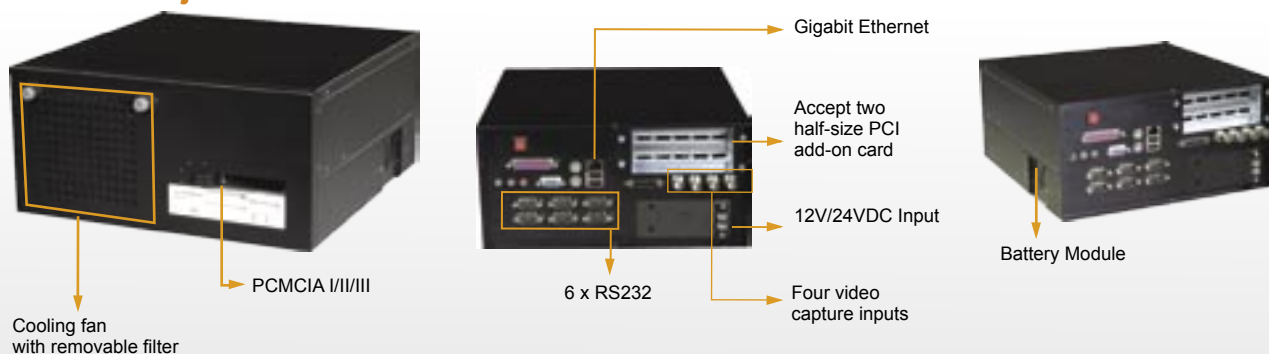
Power supply

Accessory

CPC-1201

High Integration Mobile PC System

OEM Project Welcome!



Specifications

- ◆ Desktop or wall mount, equipped with wall mount kit
- ◆ One 8cm-cooling fan with removable filter
- ◆ Accept two half-size PCI add-on card
- ◆ Standard power supply
ACE-810V power supply (12V DC Input, 100W power supply)
ACE-818C power supply (24V DC Input, 140W power supply)
ACE-720APM mechanical class 200W AC input ATX power supply, no power battery support
- ◆ Option power battery (BM-12V : 3000mAH, BM-24V : 2000mAH)

Disk Drive Bay

- ◆ 2 X 2.5" internal HDD Drive bays with best anti-vibration design Meets MIL-STD-810F 514.5C-1 standard
- ◆ 1 X 3.5" FDD Drive bay

Main Board (CP800/ CC400):

- ◆ CPU: Intel low power PIII 800MHz or ultra low power Celeron 400MHz
Package type: 478-Pin Micro FC-BGA2 (mounted on board)
- ◆ System Chipset: Intel 815E + ICH2, PCI 2.2 compliant
- ◆ System Memory

On board 256MB SDRAM and one PC100/133 SO-DIMM slot up to 512MB

- ◆ Display - Build-in FW82815 chip
V-RAM: Shared with system memory (DVMT technology)
Resolution: Up to 1600x 1200, 8 bit color
Connector: DB-15 for CRT display
- ◆ Two ATA-33 IDE RAID channel (Promise PDC 20267)
- ◆ SSD: Compact Flash type II socket on board
- ◆ WDT function: Software programmable support 1~255 second system reset
- ◆ Hardware Monitoring (CPU Vcore; Vcc; CPU/System Fan speed and thermal)

I/O Connectors(Front Side)

- ◆ PCMCIA: Cardbus interface support type I/II/III (Ricoh R54C476II)

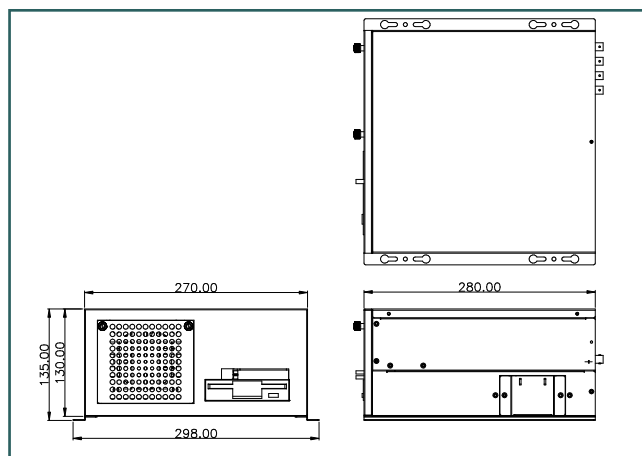
I/O Connectors (Rear Side)

- ◆ Six D-Sub9 connector for RS-232
- ◆ One D-Sub25 for LPT
- ◆ One D-Sub15 for CRT VGA output
- ◆ Two PS/2 for keyboard and mouse
- ◆ One RJ-45 for Intel 82540 Gigabit Ethernet
- ◆ Two USB 2.0
- ◆ 36 pin connector for extension IDE device
- ◆ Audio (Lin-in, Lin-out, Mic-in)
C-media 5.1 Channel PCI hardware sound, 6W Amplifier
- ◆ Four video capture inputs with BNC connector
Chip: Conexant Fusion 878A chip (Multiplexed function)
Frame speed: 30 FPS
Video Format: NTSC/ PAL/ SECAM

Environment

- ◆ Vibration: 5~17Hz, 0.1 double amplitude displacement
17~640 Hz, 1.5G acceleration peak to peak
- ◆ Shock: 10G acceleration peak to peak (11ms)
- ◆ Operating temperature: 0~50°C
- ◆ Color: Black (Pantone Black C)
- ◆ Dimension: 270mm(W) x 130mm(H) x 280mm(D)

Dimensions



Ordering Information

● CPC-1201/ CP800 /ACE-810V CC400

Mobile PC with ACE-810V 100W 12VDC input power supply

● CPC-1201/ CP800 /ACE-818C CC400

Mobile PC with ACE-818C 140W 24VDC input power supply

● CPC-1201/ CP800 /ACE-720APM CC400

Mobile PC with ACE-720APM 200W AC input power supply
(No Battery support)

Note: CP800: Low Power Pentium III 800MHz
CC400: Ultra Low Power Celeron 400MHz

IEI Optional

- **BM-12V** :
Battery module for 12V DC input system, 3000mAH
- **BM-24V** :
Battery module for 24V DC input system, 2000mAH